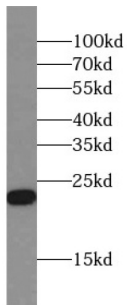
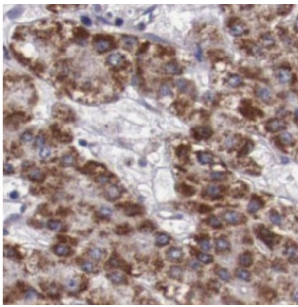


Retinol Binding Protein 4, Plasma (RBP4) Antibody

Catalogue No.: abx237192



WB analysis of human blood tissue, using RBP4 antibody (1/4000 dilution).



IHC-P analysis of human liver cancer tissue, using RBP4 Antibody (1/50 dilution).

RBP4 Antibody is a Mouse Monoclonal against RBP4.

Target:	Retinol Binding Protein 4, Plasma (RBP4)
Clonality:	Monoclonal
Reactivity:	Human
Tested Applications:	ELISA, WB, IHC, FCM
Host:	Mouse
Recommended dilutions:	WB: 1/1000 - 1/8000, IHC: 1/20 - 1/200. Optimal dilutions/concentrations should be determined by the end user.
Conjugation:	Unconjugated
Immunogen:	retinol binding protein 4, plasma
Isotype:	IgG ₁
Form:	Liquid
Purity:	≥ 95% (SDS-PAGE)

Datasheet

Version: 2.0.0
Revision date: 18 Mar 2025



Purification:	Purified by Protein A and Protein G affinity chromatography.
Storage:	Aliquot and store at -20°C. Avoid repeated freeze/thaw cycles.
Validity:	12 months.
UniProt Primary AC:	P02753 (UniProt , ExPASy)
Gene Symbol:	RBP4
KEGG:	hsa:5950
String:	9606.ENSP00000360522
Molecular Weight:	Observed MW: 23 kDa
Buffer:	PBS, pH 7.3, with 0.02% sodium azide and 50% glycerol.
Concentration:	2 mg/ml
Note:	THIS PRODUCT IS FOR RESEARCH USE ONLY. NOT FOR USE IN DIAGNOSTIC, THERAPEUTIC OR COSMETIC PROCEDURES. NOT FOR HUMAN OR ANIMAL CONSUMPTION.

For Reference Only