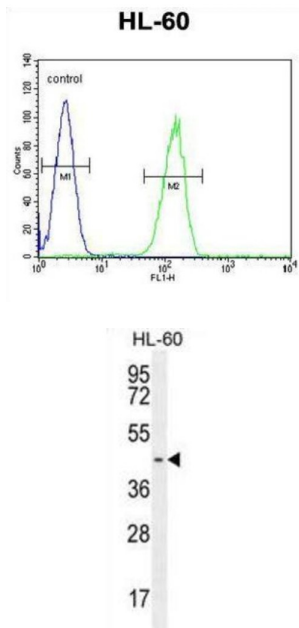


## Probable G Protein Coupled Receptor 142 (GPR142) Antibody

Catalogue No.: abx026182



GPR142 is a member of the rhodopsin family of G protein-coupled receptors (GPRs) (Fredriksson et al., 2003 [PubMed 14623098]).

<b>Target:</b>	Probable G Protein Coupled Receptor 142 (GPR142)
<b>Clonality:</b>	Polyclonal
<b>Reactivity:</b>	Human
<b>Tested Applications:</b>	ELISA, WB, FCM
<b>Host:</b>	Rabbit
<b>Recommended dilutions:</b>	WB: 1/1000, FCM: 1/10 - 1/50. Optimal dilutions/concentrations should be determined by the end user.
<b>Conjugation:</b>	Unconjugated
<b>Immunogen:</b>	KLH-conjugated synthetic peptide between 86-114 amino acids from the N-terminal region of human GPR142.
<b>Isotype:</b>	IgG
<b>Form:</b>	Liquid

# Datasheet

Version: 2.0.0  
Revision date: 25 Dec 2024



<b>Purification:</b>	Purified through a protein A column, followed by peptide affinity purification.
<b>Storage:</b>	Aliquot and store at -20°C. Avoid repeated freeze/thaw cycles.
<b>UniProt Primary AC:</b>	Q7Z601 ( <a href="#">UniProt</a> , <a href="#">ExpASY</a> )
<b>Gene Symbol:</b>	GPR142
<b>KEGG:</b>	hsa:350383
<b>String:</b>	<a href="#">9606.ENSP00000335158</a>
<b>Molecular Weight:</b>	Calculated MW: 51.1 kDa
<b>Buffer:</b>	PBS containing 0.09% sodium azide.
<b>Note:</b>	This product is for research use only.

For Reference Only