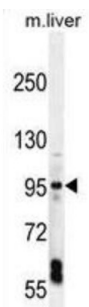
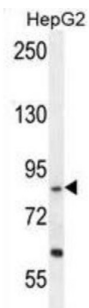
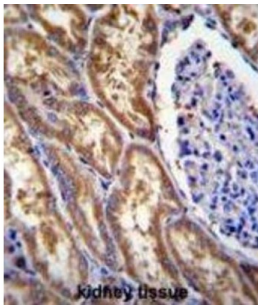


Exocyst Complex Component 3-Like Protein (EXOC3L) Antibody

Catalogue No.: abx026185



EXOC3L Antibody is a Rabbit Polyclonal antibody against EXOC3L.

Target: Exocyst Complex Component 3-Like Protein (EXOC3L)

Clonality: Polyclonal

Reactivity: Human, Mouse

Tested Applications: ELISA, WB, IHC, IF/ICC

Host: Rabbit

Recommended dilutions: WB: 1/1000, IHC-P: 1/10 - 1/50, IF/ICC: 1/10 - 1/50. Not tested in IHC-F. Optimal dilutions/concentrations should be determined by the end user.

Conjugation: Unconjugated

Datasheet

Version: 1.0.0
Revision date: 22 Nov 2024



Immunogen:	KLH-conjugated synthetic peptide between 652-680 amino acids from the C-terminal region of human EXOC3L.
Isotype:	IgG
Form:	Liquid
Purification:	Purified through a protein A column, followed by peptide affinity purification.
Storage:	Aliquot and store at -20°C. Avoid repeated freeze/thaw cycles.
UniProt Primary AC:	Q86VI1 (UniProt , ExPASy)
Gene Symbol:	EXOC3L1
KEGG:	hsa:283849
String:	9606.ENSP00000325674
Molecular Weight:	Calculated MW: 81.7 kDa
Buffer:	PBS containing 0.09% sodium azide.
Specificity:	Predicted to react with Cow EXOC3L1.
Note:	This product is for research use only.

For Reference Only