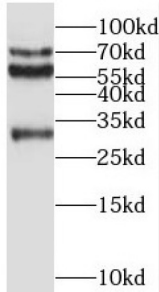


RalBP1-Associated Eps Domain-Containing Protein 2 (REPS2) Antibody

Catalogue No.: abx237242



WB analysis of mouse brain tissue, using REPS2 antibody (1/300 dilution).

REPS2 Antibody is a Rabbit Polyclonal against REPS2.

Target:	RalBP1-Associated Eps Domain-Containing Protein 2 (REPS2)
Clonality:	Polyclonal
Reactivity:	Human, Mouse
Tested Applications:	ELISA, WB, IF/ICC
Host:	Rabbit
Recommended dilutions:	WB: 1/500 - 1/2000, IF/ICC: 1/20 - 1/200. Optimal dilutions/concentrations should be determined by the end user.
Conjugation:	Unconjugated
Immunogen:	RALBP1 associated Eps domain containing 2
Isotype:	IgG
Form:	Liquid
Purity:	≥ 95% (SDS-PAGE)
Purification:	Purified by immunogen affinity chromatography.
Storage:	Aliquot and store at -20°C. Avoid repeated freeze/thaw cycles.
Validity:	12 months.

Datasheet

Version: 2.0.0
Revision date: 17 Nov 2024



UniProt Primary AC: Q8NFH8 ([UniProt](#), [ExPASy](#))

Gene Symbol: REPS2

GeneID: [9185](#)

KEGG: hsa:9185

Ensembl: ENSG00000169891

String: [9606.ENSP00000349824](#)

Molecular Weight: Observed MW: 72 kDa, 55 kDa, 30 kDa

Buffer: PBS, pH 7.3, with 0.02% sodium azide and 50% glycerol.

Concentration: 2 mg/ml

Note: This product is for research use only.

For Reference Only