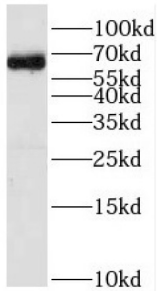
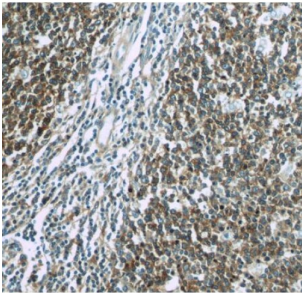


Raftlin, Lipid Raft Linker 1 (RFTN1) Antibody

Catalogue No.: abx237255



WB analysis of HeLa cells, using RFTN1 antibody (1/2000 dilution).



IHC-P analysis of human tonsillitis tissue, using RFTN1 Antibody (1/50 dilution).

RFTN1 Antibody is a Rabbit Polyclonal against RFTN1.

Target:	Raftlin, Lipid Raft Linker 1 (RFTN1)
Clonality:	Polyclonal
Reactivity:	Human
Tested Applications:	ELISA, WB, IHC
Host:	Rabbit
Recommended dilutions:	WB: 1/500 - 1/2000, IHC: 1/20 - 1/200. Optimal dilutions/concentrations should be determined by the end user.
Conjugation:	Unconjugated
Immunogen:	raftlin, lipid raft linker 1
Isotype:	IgG
Form:	Liquid
Purity:	≥ 95% (SDS-PAGE)

Datasheet

Version: 2.0.0
Revision date: 10 Apr 2025



Purification:	Purified by immunogen affinity chromatography.
Storage:	Aliquot and store at -20°C. Avoid repeated freeze/thaw cycles.
Validity:	12 months.
UniProt Primary AC:	Q14699 (UniProt , ExPASy)
Gene Symbol:	RFTN1
GeneID:	23180
HGNC:	30278
KEGG:	hsa:23180
Ensembl:	ENSG00000131378
String:	9606.ENSP00000334153
Molecular Weight:	Observed MW: 63-70 kDa
Buffer:	PBS, pH 7.3, with 0.02% sodium azide and 50% glycerol.
Concentration:	2 mg/ml
Note:	THIS PRODUCT IS FOR RESEARCH USE ONLY. NOT FOR USE IN DIAGNOSTIC, THERAPEUTIC OR COSMETIC PROCEDURES. NOT FOR HUMAN OR ANIMAL CONSUMPTION.

For Reference Only