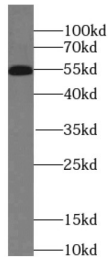
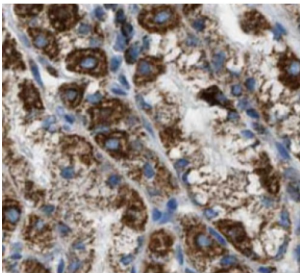


ROBO3-Specific Antibody

Catalogue No.: abx237374



WB analysis of mouse brain tissue, using ROBO3-Specific antibody (1/300 dilution).



IHC-P analysis of human glioma tissue, using ROBO3-Specific Antibody (1/50 dilution).

ROBO3-Specific Antibody is a Rabbit Polyclonal against ROBO3-Specific.

Target: ROBO3-Specific

Clonality: Polyclonal

Reactivity: Human, Mouse, Rat

Tested Applications: ELISA, WB, IHC

Host: Rabbit

Recommended dilutions: WB: 1/500 - 1/1000, IHC: 1/20 - 1/200. Optimal dilutions/concentrations should be determined by the end user.

Conjugation: Unconjugated

Immunogen: roundabout, axon guidance receptor, homolog 3 (Drosophila)

Isotype: IgG

Form: Liquid

Purity: ≥ 95% (SDS-PAGE)

Datasheet

Version: 2.0.0
Revision date: 03 Sep 2024



Purification:	Purified by immunogen affinity chromatography.
Storage:	Aliquot and store at -20°C. Avoid repeated freeze/thaw cycles.
Validity:	12 months.
UniProt Primary AC:	Q96MS0 (UniProt , ExPASy)
Gene Symbol:	ROBO3
GeneID:	64221
OMIM:	607313
HGNC:	13433
KEGG:	hsa:64221
Ensembl:	ENSG00000154134
String:	9606.ENSP00000380903
Molecular Weight:	Observed MW: 55 kDa
Buffer:	PBS, pH 7.3, with 0.02% sodium azide and 50% glycerol.
Concentration:	2 mg/ml
Note:	This product is for research use only.

For Reference Only