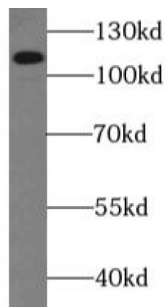


ROBO4-Specific Antibody

Catalogue No.: abx237375



WB analysis of HeLa cells, using ROBO4-Specific antibody (1/600 dilution).

ROBO4-Specific Antibody is a Rabbit Polyclonal against ROBO4-Specific.

Target:	ROBO4-Specific
Clonality:	Polyclonal
Reactivity:	Human, Mouse
Tested Applications:	ELISA, WB
Host:	Rabbit
Recommended dilutions:	WB: 1/500 - 1/1000. Optimal dilutions/concentrations should be determined by the end user.
Conjugation:	Unconjugated
Immunogen:	roundabout homolog 4, magic roundabout(Drosophila)
Isotype:	IgG
Form:	Liquid
Purity:	≥ 95% (SDS-PAGE)
Purification:	Purified by immunogen affinity chromatography.
Storage:	Aliquot and store at -20°C. Avoid repeated freeze/thaw cycles.
Validity:	12 months.
UniProt Primary AC:	Q8WZ75 (UniProt , ExPASy)

Datasheet

Version: 2.0.0
Revision date: 12 Mar 2025



Gene Symbol: ROBO4

GeneID: [54538](#)

Molecular Weight: Observed MW: 110 kDa

Buffer: PBS, pH 7.3, with 0.02% sodium azide and 50% glycerol.

Concentration: 2 mg/ml

Note: THIS PRODUCT IS FOR RESEARCH USE ONLY. NOT FOR USE IN DIAGNOSTIC, THERAPEUTIC OR COSMETIC PROCEDURES. NOT FOR HUMAN OR ANIMAL CONSUMPTION.

For Reference Only