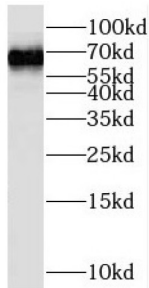


RAR Related Orphan Receptor Alpha (RORA) Antibody

Catalogue No.: abx237387



WB analysis of mouse liver tissue, using RORA antibody (1/1000 dilution).

RORA Antibody is a Rabbit Polyclonal against RORA.

Target:	RAR Related Orphan Receptor Alpha (RORA)
Clonality:	Polyclonal
Reactivity:	Human, Mouse, Rat
Tested Applications:	ELISA, WB
Host:	Rabbit
Recommended dilutions:	WB: 1/500 - 1/2000. Optimal dilutions/concentrations should be determined by the end user.
Conjugation:	Unconjugated
Immunogen:	RAR-related orphan receptor A
Isotype:	IgG
Form:	Liquid
Purity:	≥ 95% (SDS-PAGE)
Purification:	Purified by immunogen affinity chromatography.
Storage:	Aliquot and store at -20°C. Avoid repeated freeze/thaw cycles.
Validity:	12 months.
UniProt Primary AC:	P35398 (UniProt , ExpASY)

Datasheet

Version: 2.0.0
Revision date: 12 Mar 2025



Gene Symbol:	RORA
GeneID:	6095
OMIM:	600825
HGNC:	10258
KEGG:	hsa:6095
Ensembl:	ENSG00000069667
String:	9606.ENSP00000261523
Molecular Weight:	Observed MW: 60-66 kDa
Buffer:	PBS, pH 7.3, with 0.02% sodium azide and 50% glycerol.
Concentration:	2 mg/ml
Note:	THIS PRODUCT IS FOR RESEARCH USE ONLY. NOT FOR USE IN DIAGNOSTIC, THERAPEUTIC OR COSMETIC PROCEDURES. NOT FOR HUMAN OR ANIMAL CONSUMPTION.

For Reference Only