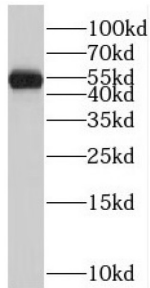
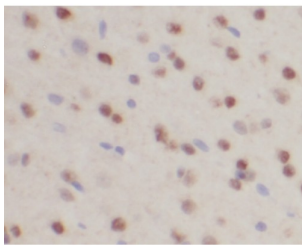


RAR Related Orphan Receptor Beta (RORB) Antibody

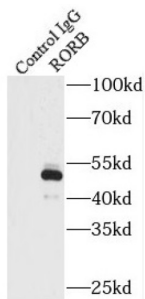
Catalogue No.: abx237388



WB analysis of Y79 cells, using RORB antibody (1/800 dilution).



IHC-P analysis of mouse brain tissue, using RORB Antibody (1/200 dilution).



IP analysis of mouse brain tissue lysate (3440 µg), using RORB antibody (4 µg, detection: 1/300 dilution).

RORB Antibody is a Rabbit Polyclonal against RORB.

Target: RAR Related Orphan Receptor Beta (RORB)**Clonality:** Polyclonal**Reactivity:** Human, Mouse, Rat**Tested Applications:** ELISA, WB, IHC, IP**Host:** Rabbit**Recommended dilutions:** WB: 1/500 - 1/2000, IHC: 1/20 - 1/200, IP: 1/200 - 1/1000. Optimal dilutions/concentrations should be determined by the end user.**Conjugation:** Unconjugated

Datasheet

Version: 3.0.0
Revision date: 06 Mar 2025



Immunogen:	RAR-related orphan receptor B
Isotype:	IgG
Form:	Liquid
Purity:	≥ 95% (SDS-PAGE)
Purification:	Purified by immunogen affinity chromatography.
Storage:	Aliquot and store at -20°C. Avoid repeated freeze/thaw cycles.
Validity:	12 months.
UniProt Primary AC:	Q92753 (UniProt , ExPASy)
Gene Symbol:	RORB
OMIM:	601972
HGNC:	10259
Ensembl:	ENSG00000198963
String:	9606.ENSP00000366093
Molecular Weight:	Observed MW: 52 kDa
Buffer:	PBS, pH 7.3, with 0.02% sodium azide and 50% glycerol.
Concentration:	2 mg/ml
Note:	THIS PRODUCT IS FOR RESEARCH USE ONLY. NOT FOR USE IN DIAGNOSTIC, THERAPEUTIC OR COSMETIC PROCEDURES. NOT FOR HUMAN OR ANIMAL CONSUMPTION.