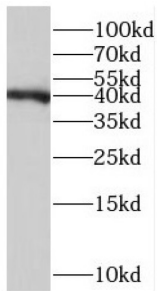
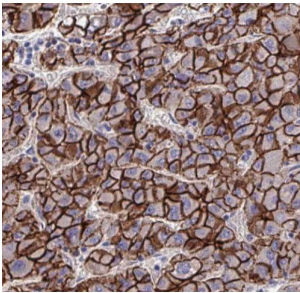


Protein XRP2 (RP2) Antibody

Catalogue No.: abx237390



WB analysis of Jurkat cells, using RP2 antibody (1/500 dilution).



IHC-P analysis of human liver cancer tissue, using RP2 antibody (1/50 dilution).

RP2 Antibody is a Rabbit Polyclonal against RP2.

| | |
|-------------------------------|---|
| Target: | Protein XRP2 (RP2) |
| Clonality: | Polyclonal |
| Reactivity: | Human, Mouse, Rat |
| Tested Applications: | ELISA, WB, IHC, FCM |
| Host: | Rabbit |
| Recommended dilutions: | WB: 1/500 - 1/2000, IHC: 1/20 - 1/200. Optimal dilutions/concentrations should be determined by the end user. |
| Conjugation: | Unconjugated |
| Immunogen: | retinitis pigmentosa 2 |
| Isotype: | IgG |
| Form: | Liquid |
| Purity: | ≥ 95% (SDS-PAGE) |

Datasheet

Version: 2.0.0
Revision date: 15 Nov 2024



| | |
|----------------------------|--|
| Purification: | Purified by immunogen affinity chromatography. |
| Storage: | Aliquot and store at -20°C. Avoid repeated freeze/thaw cycles. |
| Validity: | 12 months. |
| UniProt Primary AC: | O75695 (UniProt , ExPASy) |
| Gene Symbol: | RP2 |
| GeneID: | 6102 |
| OMIM: | 300757 |
| HGNC: | 10274 |
| KEGG: | hsa:6102 |
| Ensembl: | ENSG00000102218 |
| String: | 9606.ENSP00000218340 |
| Molecular Weight: | Observed MW: 40 kDa |
| Buffer: | PBS, pH 7.3, with 0.02% sodium azide and 50% glycerol. |
| Concentration: | 2 mg/ml |
| Note: | This product is for research use only. |

For Reference Only