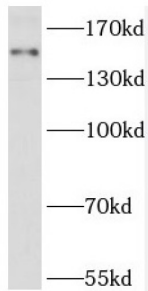
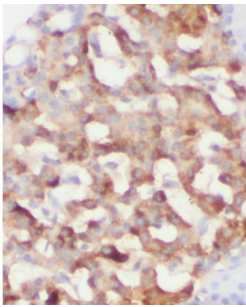


Protein Fantom (RPGRIP1L) Antibody

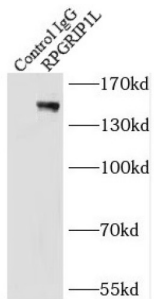
Catalogue No.: abx237404



WB analysis of HEK-293 cells, using RPGRIP1L antibody (1/800 dilution).



IHC-P analysis of human pancreas tissue, using RPGRIP1L antibody (1/50 dilution).



IP analysis of HEK-293 cell lysate (3200 µg), using RPGRIP1L antibody (4 µg, detection: 1/700 dilution).

RPGRIP1L Antibody is a Rabbit Polyclonal against RPGRIP1L.

Target:	Protein Fantom (RPGRIP1L)
Clonality:	Polyclonal
Reactivity:	Human
Tested Applications:	ELISA, WB, IHC, IP
Host:	Rabbit
Recommended dilutions:	Optimal dilutions/concentrations should be determined by the end user.
Conjugation:	Unconjugated

Datasheet

Version: 5.0.0
Revision date: 27 Sep 2024



Immunogen:	RPGRIP1-like
Isotype:	IgG
Form:	Liquid
Purity:	≥ 95% (SDS-PAGE)
Purification:	Purified by immunogen affinity chromatography.
Storage:	Aliquot and store at -20°C. Avoid repeated freeze/thaw cycles.
Validity:	12 months.
UniProt Primary AC:	Q68CZ1 (UniProt , ExPASy)
Gene Symbol:	RPGRIP1L
GeneID:	23322
OMIM:	216360
HGNC:	29168
KEGG:	hsa:23322
Ensembl:	ENSG00000103494
String:	9606.ENSP00000369257
Molecular Weight:	Observed MW: 151 kDa
Buffer:	PBS, pH 7.3, with 0.02% sodium azide and 50% glycerol.
Concentration:	2 mg/ml
Note:	This product is for research use only.