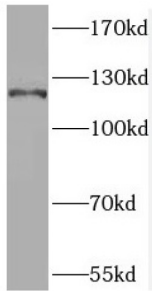
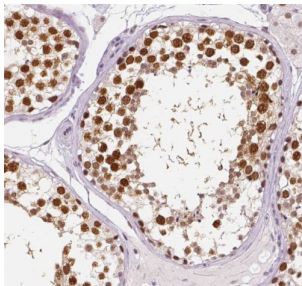


Rubicon (RUBCN) Antibody

Catalogue No.: abx237527



WB analysis of mouse liver tissue, using KIAA0226 antibody (1/1000 dilution).



IHC-P analysis of human testis tissue, using KIAA0226 antibody (1/50 dilution).

Rubicon (RUBCN) Antibody is a Rabbit Polyclonal against Rubicon (RUBCN).

Target:	Rubicon (RUBCN)
Clonality:	Polyclonal
Reactivity:	Human, Mouse, Rat
Tested Applications:	ELISA, WB, IHC
Host:	Rabbit
Recommended dilutions:	WB: 1/500 - 1/2000, IHC: 1/20 - 1/200. Optimal dilutions/concentrations should be determined by the end user.
Conjugation:	Unconjugated
Immunogen:	KIAA0226
Isotype:	IgG
Form:	Liquid
Purity:	≥ 95% (SDS-PAGE)

Datasheet

Version: 3.0.0
Revision date: 12 Mar 2025



Purification:	Purified by immunogen affinity chromatography.
Storage:	Aliquot and store at -20°C. Avoid repeated freeze/thaw cycles.
Validity:	12 months.
UniProt Primary AC:	Q92622 (UniProt , ExPASy)
Gene Symbol:	RUBCN
GeneID:	9711
OMIM:	613516
HGNC:	28991
KEGG:	hsa:9711
Ensembl:	ENSG00000145016
String:	9606.ENSP00000296343
Molecular Weight:	Observed MW: 110-130 kDa
Buffer:	PBS, pH 7.3, with 0.02% sodium azide and 50% glycerol.
Concentration:	2 mg/ml
Note:	THIS PRODUCT IS FOR RESEARCH USE ONLY. NOT FOR USE IN DIAGNOSTIC, THERAPEUTIC OR COSMETIC PROCEDURES. NOT FOR HUMAN OR ANIMAL CONSUMPTION.

For Reference Only