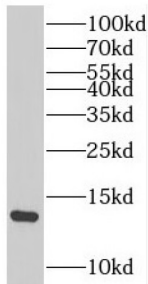
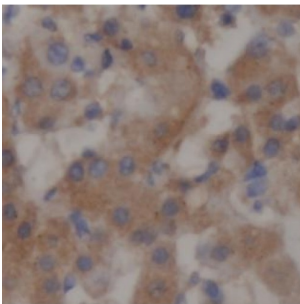


Serum Amyloid A-1 Protein (SAA1) Antibody

Catalogue No.: abx237572



WB analysis of Rat liver tissue, using SAA1 antibody (1/1000 dilution).



IHC-P analysis of human liver tissue, using SAA1 antibody (1/50 dilution).

SAA1 Antibody is a Rabbit Polyclonal against SAA1.

Target:	Serum Amyloid A-1 Protein (SAA1)
Clonality:	Polyclonal
Reactivity:	Human, Mouse, Rat
Tested Applications:	ELISA, WB, IHC
Host:	Rabbit
Recommended dilutions:	WB: 1/500 - 1/2000, IHC: 1/50 - 1/200. Optimal dilutions/concentrations should be determined by the end user.
Conjugation:	Unconjugated
Immunogen:	serum amyloid A1
Isotype:	IgG
Form:	Liquid
Purity:	≥ 95% (SDS-PAGE)

Datasheet

Version: 1.0.0
Revision date: 06 Oct 2024



Purification:	Purified by immunogen affinity chromatography.
Storage:	Aliquot and store at -20°C. Avoid repeated freeze/thaw cycles.
Validity:	12 months.
UniProt Primary AC:	P0DJ18 (UniProt , ExPASy)
Gene Symbol:	SAA1
GeneID:	6288
OMIM:	104750
KEGG:	hsa:6288
Molecular Weight:	Observed MW: 14 kDa
Buffer:	PBS, pH 7.3, with 0.02% sodium azide and 50% glycerol.
Concentration:	2 mg/ml
Note:	This product is for research use only.

For Reference Only