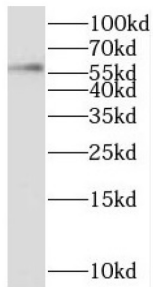
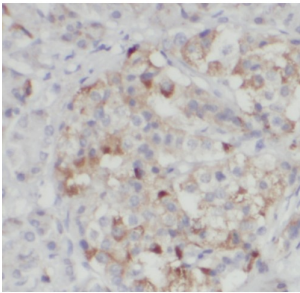


Sex Comb On Midleg Homolog 1 (Drosophila) (SCMH1) Antibody

Catalogue No.: abx237638



WB analysis of human lung tissue, using SCMH1 antibody (1/500 dilution).



IHC-P analysis of human pancreas cancer tissue, using SCMH1 antibody (1/100 dilution).

SCMH1 Antibody is a Rabbit Polyclonal against SCMH1.

Target:	Sex Comb On Midleg Homolog 1 (Drosophila) (SCMH1)
Clonality:	Polyclonal
Reactivity:	Human, Mouse, Rat
Tested Applications:	ELISA, WB, IHC
Host:	Rabbit
Recommended dilutions:	WB: 1/500 - 1/2000, IHC: 1/20 - 1/200. Optimal dilutions/concentrations should be determined by the end user.
Conjugation:	Unconjugated
Immunogen:	sex comb on midleg homolog 1(Drosophila)
Isotype:	IgG
Form:	Liquid
Purity:	≥ 95% (SDS-PAGE)

Datasheet

Version: 2.0.0
Revision date: 06 Mar 2025



Purification:	Purified by immunogen affinity chromatography.
Storage:	Aliquot and store at -20°C. Avoid repeated freeze/thaw cycles.
Validity:	12 months.
UniProt Primary AC:	Q96GD3 (UniProt , ExPASy)
Gene Symbol:	SCMH1
GeneID:	22955
OMIM:	616396
HGNC:	19003
KEGG:	hsa:22955
Ensembl:	ENSG00000010803
String:	9606.ENSP00000318094
Molecular Weight:	Observed MW: 58 kDa
Buffer:	PBS, pH 7.3, with 0.02% sodium azide and 50% glycerol.
Concentration:	2 mg/ml
Note:	THIS PRODUCT IS FOR RESEARCH USE ONLY. NOT FOR USE IN DIAGNOSTIC, THERAPEUTIC OR COSMETIC PROCEDURES. NOT FOR HUMAN OR ANIMAL CONSUMPTION.

For Reference Only