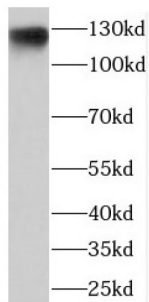
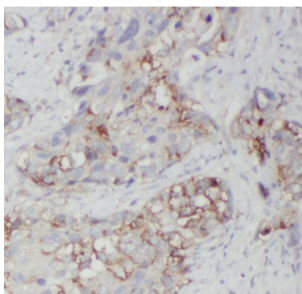


## SDCCAG1 Antibody

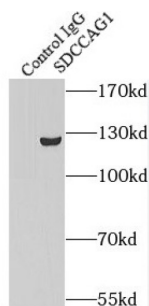
Catalogue No.: abx237663



WB analysis of A549 cells, using SDCCAG1 antibody (1/500 dilution).



IHC-P analysis of human lung cancer tissue, using SDCCAG1 antibody (1/50 dilution).



IP analysis of A549 cell lysate (1800 µg), using SDCCAG1 antibody (4 µg, detection: 1/500 dilution).

SDCCAG1 Antibody is a Rabbit Polyclonal against SDCCAG1.

**Target:** SDCCAG1

**Clonality:** Polyclonal

**Reactivity:** Human, Mouse, Rat

**Tested Applications:** ELISA, WB, IHC, IP

**Host:** Rabbit

**Recommended dilutions:** WB: 1/500 - 1/2000, IHC: 1/20 - 1/200, IP: 1/200 - 1/1000. Optimal dilutions/concentrations should be determined by the end user.

**Conjugation:** Unconjugated

# Datasheet

Version: 3.0.0  
Revision date: 12 Mar 2025



<b>Immunogen:</b>	serologically defined colon cancer antigen 1
<b>Isotype:</b>	IgG
<b>Form:</b>	Liquid
<b>Purity:</b>	≥ 95% (SDS-PAGE)
<b>Purification:</b>	Purified by immunogen affinity chromatography.
<b>Storage:</b>	Aliquot and store at -20°C. Avoid repeated freeze/thaw cycles.
<b>Validity:</b>	12 months.
<b>UniProt Primary AC:</b>	O60524 ( <a href="#">UniProt</a> , <a href="#">ExPASy</a> )
<b>Gene Symbol:</b>	NEMF
<b>GeneID:</b>	<a href="#">9147</a>
<b>OMIM:</b>	<a href="#">608378</a>
<b>HGNC:</b>	10663
<b>KEGG:</b>	hsa:9147
<b>Ensembl:</b>	ENSG00000165525
<b>String:</b>	<a href="#">9606.ENSP00000298310</a>
<b>Molecular Weight:</b>	Observed MW: 123 kDa
<b>Buffer:</b>	PBS, pH 7.3, with 0.02% sodium azide and 50% glycerol.
<b>Concentration:</b>	2 mg/ml
<b>Note:</b>	THIS PRODUCT IS FOR RESEARCH USE ONLY. NOT FOR USE IN DIAGNOSTIC, THERAPEUTIC OR COSMETIC PROCEDURES. NOT FOR HUMAN OR ANIMAL CONSUMPTION.