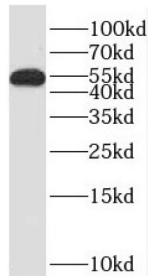


CWC27 Spliceosome Associated Protein Homolog (SDCCAG10) Antibody

Catalogue No.: abx237664



WB analysis of HepG2 cells, using SDCCAG10 antibody (1/500 dilution).

SDCCAG10 Antibody is a Rabbit Polyclonal against SDCCAG10.

Target:	CWC27 Spliceosome Associated Protein Homolog (SDCCAG10)
Clonality:	Polyclonal
Reactivity:	Human, Mouse, Rat
Tested Applications:	ELISA, WB
Host:	Rabbit
Recommended dilutions:	WB: 1/500 - 1/2000. Optimal dilutions/concentrations should be determined by the end user.
Conjugation:	Unconjugated
Immunogen:	serologically defined colon cancer antigen 10
Isotype:	IgG
Form:	Liquid
Purity:	≥ 95% (SDS-PAGE)
Purification:	Purified by immunogen affinity chromatography.
Storage:	Aliquot and store at -20°C. Avoid repeated freeze/thaw cycles.
Validity:	12 months.

Datasheet

Version: 1.0.0
Revision date: 03 Feb 2025



UniProt Primary AC:	Q6UX04 (UniProt , ExPASy)
Gene Symbol:	CWC27
GeneID:	10283
OMIM:	250410
HGNC:	10664
KEGG:	hsa:10283
Ensembl:	ENSG00000153015
String:	9606.ENSP00000370460
Molecular Weight:	Observed MW: 54 kDa
Buffer:	PBS, pH 7.3, with 0.02% sodium azide and 50% glycerol.
Concentration:	2 mg/ml
Note:	This product is for research use only.

For Reference Only