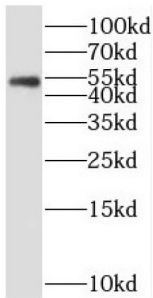
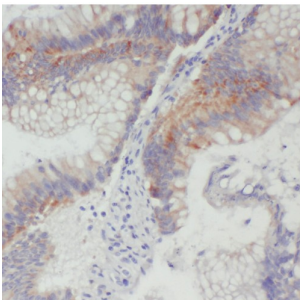


Serologically Defined Colon Cancer Antigen 3 (SDCCAG3) Antibody

Catalogue No.: abx237665



WB analysis of mouse pancreas tissue, using SDCCAG3 antibody (1/300 dilution).



IHC-P analysis of human colon cancer tissue, using SDCCAG3 antibody (1/50 dilution).

SDCCAG3 Antibody is a Rabbit Polyclonal against SDCCAG3.

Target:	Serologically Defined Colon Cancer Antigen 3 (SDCCAG3)
Clonality:	Polyclonal
Reactivity:	Human, Mouse, Rat
Tested Applications:	ELISA, WB, IHC, IF/ICC
Host:	Rabbit
Recommended dilutions:	WB: 1/200 - 1/1000, IHC: 1/20 - 1/200, IF/ICC: 1/20 - 1/200. Optimal dilutions/concentrations should be determined by the end user.
Conjugation:	Unconjugated
Immunogen:	serologically defined colon cancer antigen 3
Isotype:	IgG
Form:	Liquid
Purity:	≥ 95% (SDS-PAGE)

Datasheet

Version: 3.0.0
Revision date: 13 Mar 2025



Purification:	Purified by immunogen affinity chromatography.
Storage:	Aliquot and store at -20°C. Avoid repeated freeze/thaw cycles.
Validity:	12 months.
UniProt Primary AC:	Q96C92 (UniProt , ExpASY)
Gene Symbol:	ENTR1
GeneID:	10807
KEGG:	hsa:10807
String:	9606.ENSP00000349929
Molecular Weight:	Observed MW: 48-60 kDa
Buffer:	PBS, pH 7.3, with 0.02% sodium azide and 50% glycerol.
Concentration:	2 mg/ml
Note:	THIS PRODUCT IS FOR RESEARCH USE ONLY. NOT FOR USE IN DIAGNOSTIC, THERAPEUTIC OR COSMETIC PROCEDURES. NOT FOR HUMAN OR ANIMAL CONSUMPTION.

For Reference Only