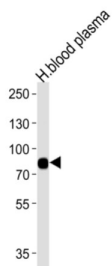
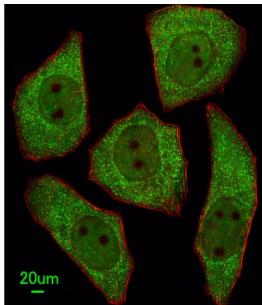


Leucine Rich Repeat Containing 45 (LRRC45) Antibody

Catalogue No.: abx026230



LRRC45 Antibody is a Rabbit Polyclonal antibody against LRRC45.

Target:	Leucine Rich Repeat Containing 45 (LRRC45)
Clonality:	Polyclonal
Reactivity:	Human
Tested Applications:	ELISA, WB, IHC, IF/ICC, FCM
Host:	Rabbit
Recommended dilutions:	WB: 1/1000, IHC-P: 1/50 - 1/100, IF/ICC: 1/25, FCM: 1/10 - 1/50. Not tested in IHC-F. Optimal dilutions/concentrations should be determined by the end user.
Conjugation:	Unconjugated
Immunogen:	KLH-conjugated synthetic peptide between 615-643 amino acids from the C-terminal region of human LRRC45.
Isotype:	IgG
Form:	Liquid
Purification:	Purified through a protein A column, followed by peptide affinity purification.

Datasheet

Version: 2.0.0
Revision date: 10 Mar 2025



Storage: Aliquot and store at -20°C. Avoid repeated freeze/thaw cycles.

UniProt Primary AC: Q96CN5 ([UniProt](#), [ExPASy](#))

KEGG: hsa:201255

String: [9606.ENSP00000306760](#)

Molecular Weight: Calculated MW: 76 kDa

Buffer: PBS containing 0.09% sodium azide.

Note: THIS PRODUCT IS FOR RESEARCH USE ONLY. NOT FOR USE IN DIAGNOSTIC, THERAPEUTIC OR COSMETIC PROCEDURES. NOT FOR HUMAN OR ANIMAL CONSUMPTION.

For Reference Only