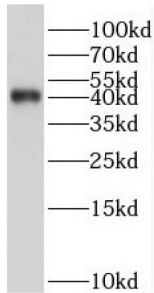


Serpin B9 (SERPINB9) Antibody

Catalogue No.: abx237749



WB analysis of K-562 cells, using SERPINB9 antibody (1/2000 dilution).

SERPINB9 Antibody is a Rabbit Polyclonal against SERPINB9.

Target:	Serpin B9 (SERPINB9)
Clonality:	Polyclonal
Reactivity:	Human, Mouse, Rat
Tested Applications:	ELISA, WB
Host:	Rabbit
Recommended dilutions:	WB: 1/500 - 1/2000. Optimal dilutions/concentrations should be determined by the end user.
Conjugation:	Unconjugated
Immunogen:	serpin peptidase inhibitor, clade B(ovalbumin), member 9
Isotype:	IgG
Form:	Liquid
Purity:	≥ 95% (SDS-PAGE)
Purification:	Purified by immunogen affinity chromatography.
Storage:	Aliquot and store at -20°C. Avoid repeated freeze/thaw cycles.
Validity:	12 months.
UniProt Primary AC:	P50453 (UniProt , ExpASY)

Datasheet

Version: 1.0.0
Revision date: 27 Dec 2024



Gene Symbol:	SERPINB9
GeneID:	5272
OMIM:	601799
HGNC:	8955
KEGG:	hsa:5272
Ensembl:	ENSG00000170542
String:	9606.ENSP00000370074
Molecular Weight:	Observed MW: 42 kDa
Buffer:	PBS, pH 7.3, with 0.02% sodium azide and 50% glycerol.
Concentration:	2 mg/ml
Note:	This product is for research use only.

For Reference Only