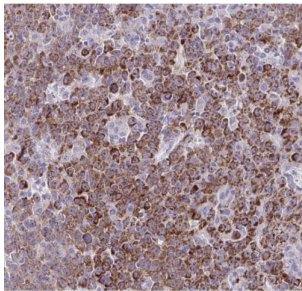


Serpin D1 (SERPIND1) Antibody

Catalogue No.: abx237750



WB analysis of human plasma tissue, using SERPIND1 antibody (1/600 dilution).



IHC-P analysis of human liver cancer tissue, using SERPIND1 Antibody (1/50 dilution).

SERPIND1 Antibody is a Rabbit Polyclonal against SERPIND1.

Target:	Serpin D1 (SERPIND1)
Clonality:	Polyclonal
Reactivity:	Human, Mouse, Rat
Tested Applications:	ELISA, WB, IHC
Host:	Rabbit
Recommended dilutions:	WB: 1/500 - 1/2000, IHC: 1/20 - 1/200. Optimal dilutions/concentrations should be determined by the end user.
Conjugation:	Unconjugated
Immunogen:	serpin peptidase inhibitor, clade D (heparin cofactor), member 1
Isotype:	IgG
Form:	Liquid
Purity:	≥ 95% (SDS-PAGE)

Datasheet

Version: 1.0.0
Revision date: 14 Aug 2024



Purification:	Purified by immunogen affinity chromatography.
Storage:	Aliquot and store at -20°C. Avoid repeated freeze/thaw cycles.
Validity:	12 months.
UniProt Primary AC:	P05546 (UniProt , ExpASY)
Gene Symbol:	SERPIND1
GeneID:	3053
OMIM:	142360
HGNC:	4838
KEGG:	hsa:3053
Ensembl:	ENSG00000099937
String:	9606.ENSP00000215727
Molecular Weight:	Observed MW: 57-60 kDa
Buffer:	PBS, pH 7.3, with 0.02% sodium azide and 50% glycerol.
Concentration:	2 mg/ml
Note:	This product is for research use only.

For Reference Only