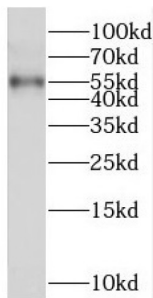
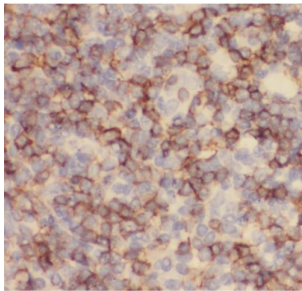


Plasma Protease C1 Inhibitor (SERPING1) Antibody

Catalogue No.: abx237753



WB analysis of mouse liver tissue, using SERPING1 antibody (1/1000 dilution).



IHC-P analysis of human tonsillitis tissue, using SERPING1 Antibody (1/50 dilution).

SERPING1 Antibody is a Rabbit Polyclonal against SERPING1.

Target:	Plasma Protease C1 Inhibitor (SERPING1)
Clonality:	Polyclonal
Reactivity:	Human, Mouse
Tested Applications:	ELISA, WB, IHC, IF/ICC
Host:	Rabbit
Recommended dilutions:	WB: 1/500 - 1/5000, IHC: 1/20 - 1/200, IF/ICC: 1/10 - 1/100. Optimal dilutions/concentrations should be determined by the end user.
Conjugation:	Unconjugated
Immunogen:	serpin peptidase inhibitor, clade G(C1 inhibitor), member 1
Isotype:	IgG
Form:	Liquid
Purity:	≥ 95% (SDS-PAGE)

Datasheet

Version: 1.0.0
Revision date: 31 Dec 2024



Purification:	Purified by immunogen affinity chromatography.
Storage:	Aliquot and store at -20°C. Avoid repeated freeze/thaw cycles.
Validity:	12 months.
UniProt Primary AC:	P05155 (UniProt , ExpASY)
KEGG:	hsa:710
String:	9606.ENSP00000278407
Molecular Weight:	Observed MW: 55 kDa
Buffer:	PBS, pH 7.3, with 0.02% sodium azide and 50% glycerol.
Concentration:	2 mg/ml
Note:	This product is for research use only.

For Reference Only