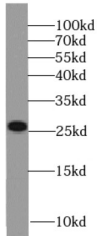
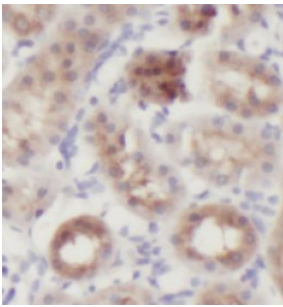


Serum Amyloid P Component (APCS) Antibody

Catalogue No.: abx237757



WB analysis of human kidney tissue, using APCS antibody (1/1000 dilution).



IHC-P analysis of human kidney tissue, using APCS antibody (1/50 dilution).

Serum amyloid P component Antibody is a Mouse Monoclonal against Serum amyloid P component.

Target: Serum Amyloid P Component (APCS)

Clonality: Monoclonal

Reactivity: Human

Tested Applications: ELISA, WB, IHC

Host: Mouse

Recommended dilutions: WB: 1/500 - 1/2000, IHC: 1/20 - 1/200. Optimal dilutions/concentrations should be determined by the end user.

Conjugation: Unconjugated

Immunogen: amyloid P component, serum

Isotype: IgG₁

Form: Liquid

Purity: ≥ 95% (SDS-PAGE)

Datasheet

Version: 3.0.0
Revision date: 24 Apr 2025



Purification:	Purified by Protein A and Protein G affinity chromatography.
Storage:	Aliquot and store at -20°C. Avoid repeated freeze/thaw cycles.
Validity:	12 months.
UniProt Primary AC:	P02743 (UniProt , ExpASY)
Gene Symbol:	APCS
GeneID:	325
OMIM:	104770
KEGG:	hsa:325
String:	9606.ENSP00000255040
Molecular Weight:	Observed MW: 27 kDa
Buffer:	PBS, pH 7.3, with 0.02% sodium azide and 50% glycerol.
Concentration:	2 mg/ml
Note:	THIS PRODUCT IS FOR RESEARCH USE ONLY. NOT FOR USE IN DIAGNOSTIC, THERAPEUTIC OR COSMETIC PROCEDURES. NOT FOR HUMAN OR ANIMAL CONSUMPTION.

For Reference Only