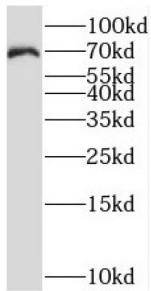
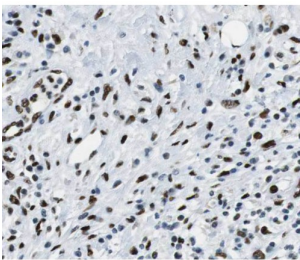


SHC-Transforming Protein 1 (SHC1) Antibody

Catalogue No.: abx237840



WB analysis of NIH/3T3 cells, using SHC1 antibody (1/500 dilution).



IHC-P analysis of human pancreas cancer tissue, using SHC1 antibody (1/50 dilution).

SHC Antibody is a Rabbit Polyclonal against SHC.

Target:	SHC-Transforming Protein 1 (SHC1)
Clonality:	Polyclonal
Reactivity:	Human, Mouse, Rat
Tested Applications:	ELISA, WB, IHC, IF/ICC
Host:	Rabbit
Recommended dilutions:	WB: 1/500 - 1/2000, IHC: 1/20 - 1/200, IF/ICC: 1/20 - 1/200. Optimal dilutions/concentrations should be determined by the end user.
Conjugation:	Unconjugated
Immunogen:	SHC(Src homology 2 domain containing) transforming protein 1
Isotype:	IgG
Form:	Liquid
Purity:	≥ 95% (SDS-PAGE)

Datasheet

Version: 1.0.0
Revision date: 09 Nov 2024



Purification:	Purified by immunogen affinity chromatography.
Storage:	Aliquot and store at -20°C. Avoid repeated freeze/thaw cycles.
Validity:	12 months.
UniProt Primary AC:	P29353 (UniProt , ExPASy)
Gene Symbol:	SHC1
GeneID:	6464
OMIM:	600560
HGNC:	10840
KEGG:	hsa:6464
Ensembl:	ENSG00000160691
String:	9606.ENSP00000401303
Molecular Weight:	Observed MW: 66 kDa
Buffer:	PBS, pH 7.3, with 0.02% sodium azide and 50% glycerol.
Concentration:	2 mg/ml
Note:	This product is for research use only.

For Reference Only