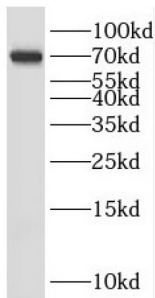


## SHC-Transforming Protein 4 (SHC4) Antibody

Catalogue No.: abx237842



WB analysis of SH-SY5Y cells, using SHC4 antibody (1/1500 dilution).

SHC4 Antibody is a Rabbit Polyclonal against SHC4.

<b>Target:</b>	SHC-Transforming Protein 4 (SHC4)
<b>Clonality:</b>	Polyclonal
<b>Reactivity:</b>	Human, Mouse
<b>Tested Applications:</b>	ELISA, WB
<b>Host:</b>	Rabbit
<b>Recommended dilutions:</b>	WB: 1/500 - 1/2000. Optimal dilutions/concentrations should be determined by the end user.
<b>Conjugation:</b>	Unconjugated
<b>Immunogen:</b>	SHC(Src homology 2 domain containing) family, member 4
<b>Isotype:</b>	IgG
<b>Form:</b>	Liquid
<b>Purity:</b>	≥ 95% (SDS-PAGE)
<b>Purification:</b>	Purified by immunogen affinity chromatography.
<b>Storage:</b>	Aliquot and store at -20°C. Avoid repeated freeze/thaw cycles.
<b>Validity:</b>	12 months.
<b>UniProt Primary AC:</b>	Q6S5L8 ( <a href="#">UniProt</a> , <a href="#">ExPASy</a> )

# Datasheet

Version: 3.0.0  
Revision date: 08 Nov 2024



**Gene Symbol:** SHC4

**GeneID:** [399694](#)

**OMIM:** [617372](#)

**NCBI Accession:** NP\_976224.3, NM\_203349.3

**KEGG:** hsa:399694

**String:** [9606.ENSP00000329668](#)

**Molecular Weight:** Observed MW: 69 kDa

**Buffer:** PBS, pH 7.3, with 0.02% sodium azide and 50% glycerol.

**Concentration:** 2 mg/ml

**Note:** This product is for research use only.

For Reference Only