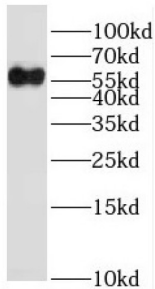
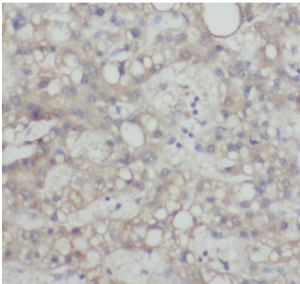


## Sialic Acid-Binding Ig-Like Lectin 9 (SIGLEC9) Antibody

Catalogue No.: abx237863



WB analysis of HL-60 cells, using SIGLEC9 antibody (1/1000 dilution).



IHC-P analysis of human liver cancer tissue, using SIGLEC9 antibody (1/100 dilution).

SIGLEC9 Antibody is a Rabbit Polyclonal against SIGLEC9.

**Target:** Sialic Acid-Binding Ig-Like Lectin 9 (SIGLEC9)

**Clonality:** Polyclonal

**Reactivity:** Human, Mouse

**Tested Applications:** ELISA, WB, IHC

**Host:** Rabbit

**Recommended dilutions:** WB: 1/500 - 1/2000, IHC: 1/20 - 1/200. Optimal dilutions/concentrations should be determined by the end user.

**Conjugation:** Unconjugated

**Immunogen:** sialic acid binding Ig-like lectin 9

**Isotype:** IgG

**Form:** Liquid

**Purity:** ≥ 95% (SDS-PAGE)

# Datasheet

Version: 3.0.0  
Revision date: 12 Mar 2025



<b>Purification:</b>	Purified by immunogen affinity chromatography.
<b>Storage:</b>	Aliquot and store at -20°C. Avoid repeated freeze/thaw cycles.
<b>Validity:</b>	12 months.
<b>UniProt Primary AC:</b>	Q9Y336 ( <a href="#">UniProt</a> , <a href="#">ExpASY</a> )
<b>Gene Symbol:</b>	SIGLEC9
<b>GeneID:</b>	<a href="#">27180</a>
<b>OMIM:</b>	<a href="#">605640</a>
<b>HGNC:</b>	10878
<b>Ensembl:</b>	ENSG00000129450
<b>String:</b>	<a href="#">9606.ENSP00000413861</a>
<b>Molecular Weight:</b>	Observed MW: 55-60 kDa
<b>Buffer:</b>	PBS, pH 7.3, with 0.02% sodium azide and 50% glycerol.
<b>Concentration:</b>	2 mg/ml
<b>Note:</b>	THIS PRODUCT IS FOR RESEARCH USE ONLY. NOT FOR USE IN DIAGNOSTIC, THERAPEUTIC OR COSMETIC PROCEDURES. NOT FOR HUMAN OR ANIMAL CONSUMPTION.

For Reference Only