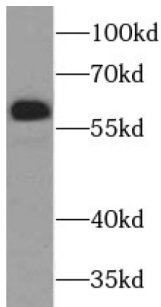
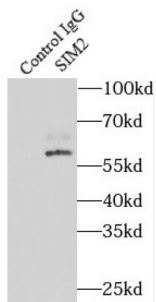


Class E Basic Helix-Loop-Helix Protein 15 (SIM2) Antibody

Catalogue No.: abx237869



WB analysis of HepG2 cells, using SIM2 antibody (1/1000 dilution).



IP analysis of mouse skeletal muscle tissue lysate (2200 µg), using SIM2 antibody (4 µg, detection: 1/800 dilution).

SIM2 Antibody is a Rabbit Polyclonal against SIM2.

Target:	Class E Basic Helix-Loop-Helix Protein 15 (SIM2)
Clonality:	Polyclonal
Reactivity:	Human, Mouse, Rat
Tested Applications:	ELISA, WB, IP
Host:	Rabbit
Recommended dilutions:	WB: 1/500 - 1/2000, IP: 1/500 - 1/1000. Optimal dilutions/concentrations should be determined by the end user.
Conjugation:	Unconjugated
Immunogen:	single-minded homolog 2 (Drosophila)
Isotype:	IgG
Form:	Liquid
Purity:	≥ 95% (SDS-PAGE)

Datasheet

Version: 3.0.0
Revision date: 23 Nov 2024



Purification:	Purified by immunogen affinity chromatography.
Storage:	Aliquot and store at -20°C. Avoid repeated freeze/thaw cycles.
Validity:	12 months.
UniProt Primary AC:	Q14190 (UniProt , ExpASY)
Gene Symbol:	SIM2
GeneID:	6493
OMIM:	600892
HGNC:	10883
KEGG:	hsa:6493
Ensembl:	ENSG00000159263
String:	9606.ENSP00000290399
Molecular Weight:	Observed MW: 60 kDa
Buffer:	PBS, pH 7.3, with 0.02% sodium azide and 50% glycerol.
Concentration:	2 mg/ml
Note:	This product is for research use only.

For Reference Only