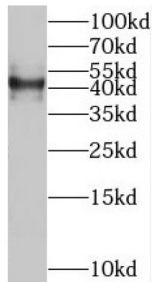


Solute Carrier Family 35 Member F2 (SLC35F2) Antibody

Catalogue No.: abx237954



WB analysis of A549 cells, using SLC35F2 antibody (1/600 dilution).

SLC35F2 Antibody is a Rabbit Polyclonal against SLC35F2.

Target:	Solute Carrier Family 35 Member F2 (SLC35F2)
Clonality:	Polyclonal
Reactivity:	Human, Mouse
Tested Applications:	ELISA, WB
Host:	Rabbit
Recommended dilutions:	WB: 1/500 - 1/2000. Optimal dilutions/concentrations should be determined by the end user.
Conjugation:	Unconjugated
Immunogen:	solute carrier family 35, member F2
Isotype:	IgG
Form:	Liquid
Purity:	≥ 95% (SDS-PAGE)
Purification:	Purified by immunogen affinity chromatography.
Storage:	Aliquot and store at -20°C. Avoid repeated freeze/thaw cycles.
Validity:	12 months.
UniProt Primary AC:	Q8IXU6 (UniProt , ExPASy)

Datasheet

Version: 1.0.0
Revision date: 17 Oct 2024



Gene Symbol: SLC35F2

GeneID: [54733](#)

HGNC: 23615

KEGG: hsa:54733

Ensembl: ENSG00000110660

String: [9606.ENSP00000436785](#)

Molecular Weight: Observed MW: 41-50 kDa

Buffer: PBS, pH 7.3, with 0.02% sodium azide and 50% glycerol.

Concentration: 2 mg/ml

Note: This product is for research use only.

For Reference Only