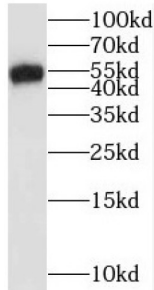
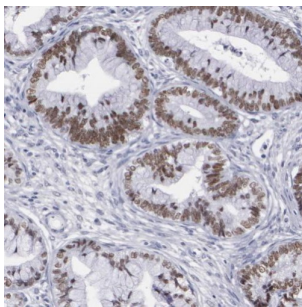


SWI/SNF Related, Matrix Associated, Actin Dependent Regulator of Chromatin, Subfamily D, Member 2 (SMARCD2) Antibody

Catalogue No.: abx238012



WB analysis of RAW264.7 cells, using SMARCD2 antibody (1/500 dilution).



IHC-P analysis of human cervical cancer tissue, using SMARCD2 antibody (1/50 dilution).

SMARCD2 Antibody is a Rabbit Polyclonal against SMARCD2.

Target:	SWI/SNF Related, Matrix Associated, Actin Dependent Regulator of Chromatin, Subfamily D, Member 2 (SMARCD2)
Clonality:	Polyclonal
Reactivity:	Human, Mouse, Rat
Tested Applications:	ELISA, WB, IHC
Host:	Rabbit
Recommended dilutions:	WB: 1/500 - 1/2000, IHC: 1/20 - 1/200. Optimal dilutions/concentrations should be determined by the end user.
Conjugation:	Unconjugated
Immunogen:	SWI/SNF related, matrix associated, actin dependent regulator of chromatin, subfamily d, member 2
Isotype:	IgG
Form:	Liquid

Datasheet

Version: 3.0.0
Revision date: 02 Feb 2025



Purity:	≥ 95% (SDS-PAGE)
Purification:	Purified by immunogen affinity chromatography.
Storage:	Aliquot and store at -20°C. Avoid repeated freeze/thaw cycles.
Validity:	12 months.
UniProt Primary AC:	Q92925 (UniProt , ExPASy)
Gene Symbol:	SMARCD2
GeneID:	6603
OMIM:	601736
HGNC:	11107
KEGG:	hsa:6603
Ensembl:	ENSG00000108604
String:	9606.ENSP00000392617
Molecular Weight:	Observed MW: 52 kDa
Buffer:	PBS, pH 7.3, with 0.02% sodium azide and 50% glycerol.
Concentration:	2 mg/ml
Note:	This product is for research use only.

For Reference Only