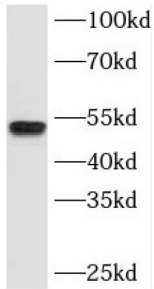
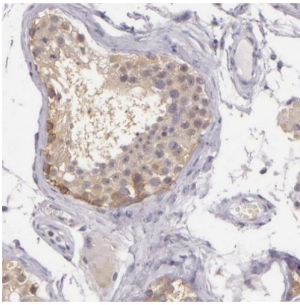


## Spermatogenic Leucine Zipper Protein 1 (SPZ1) Antibody

Catalogue No.: abx238208



WB analysis of PC-3 cells, using SPZ1 antibody (1/1000 dilution).



IHC-P analysis of human testis tissue, using SPZ1 antibody (1/100 dilution).

SPZ1 Antibody is a Rabbit Polyclonal against SPZ1.

**Target:** Spermatogenic Leucine Zipper Protein 1 (SPZ1)

**Clonality:** Polyclonal

**Reactivity:** Human

**Tested Applications:** ELISA, WB, IHC

**Host:** Rabbit

**Recommended dilutions:** WB: 1/500 - 1/5000, IHC: 1/20 - 1/200, IF/ICC: 1/50 - 1/500. Optimal dilutions/concentrations should be determined by the end user.

**Conjugation:** Unconjugated

**Immunogen:** spermatogenic leucine zipper 1

**Isotype:** IgG

**Form:** Liquid

**Purity:** ≥ 95% (SDS-PAGE)

# Datasheet

Version: 2.0.0  
Revision date: 06 Mar 2025



<b>Purification:</b>	Purified by immunogen affinity chromatography.
<b>Storage:</b>	Aliquot and store at -20°C. Avoid repeated freeze/thaw cycles.
<b>Validity:</b>	12 months.
<b>UniProt Primary AC:</b>	Q9BXG8 ( <a href="#">UniProt</a> , <a href="#">ExPASy</a> )
<b>Gene Symbol:</b>	SPZ1
<b>GeneID:</b>	<a href="#">84654</a>
<b>OMIM:</b>	<a href="#">618068</a>
<b>HGNC:</b>	30721
<b>Ensembl:</b>	ENSG00000164299
<b>String:</b>	<a href="#">9606.ENSP00000369611</a>
<b>Molecular Weight:</b>	Observed MW: 49-55 kDa
<b>Buffer:</b>	PBS, pH 7.3, with 0.02% sodium azide and 50% glycerol.
<b>Concentration:</b>	2 mg/ml
<b>Note:</b>	THIS PRODUCT IS FOR RESEARCH USE ONLY. NOT FOR USE IN DIAGNOSTIC, THERAPEUTIC OR COSMETIC PROCEDURES. NOT FOR HUMAN OR ANIMAL CONSUMPTION.

For Reference Only