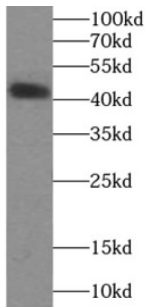
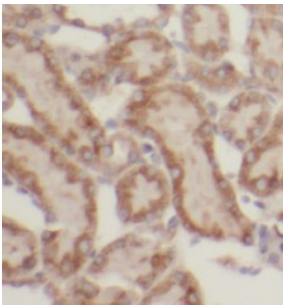


## Somatostatin Receptor Type 2 (SSTR2) Antibody

Catalogue No.: abx238253



WB analysis of SW480 cells, using SSTR2 antibody (1/500 dilution).



IHC-P analysis of human kidney tissue, using SSTR2 Antibody (1/50 dilution).

SSTR2 Antibody is a Rabbit Polyclonal against SSTR2.

**Target:** Somatostatin Receptor Type 2 (SSTR2)

**Clonality:** Polyclonal

**Reactivity:** Human, Mouse, Rat

**Tested Applications:** ELISA, WB, IHC

**Host:** Rabbit

**Recommended dilutions:** WB: 1/500 - 1/1000, IHC: 1/50 - 1/100. Optimal dilutions/concentrations should be determined by the end user.

**Conjugation:** Unconjugated

**Immunogen:** somatostatin receptor 2

**Isotype:** IgG

**Form:** Liquid

**Purity:** ≥ 95% (SDS-PAGE)

# Datasheet

Version: 1.0.0  
Revision date: 03 Feb 2025



<b>Purification:</b>	Purified by immunogen affinity chromatography.
<b>Storage:</b>	Aliquot and store at -20°C. Avoid repeated freeze/thaw cycles.
<b>Validity:</b>	12 months.
<b>UniProt Primary AC:</b>	P30874 ( <a href="#">UniProt</a> , <a href="#">ExpASY</a> )
<b>Gene Symbol:</b>	SSTR2
<b>GeneID:</b>	<a href="#">6752</a>
<b>KEGG:</b>	hsa:6752
<b>Ensembl:</b>	ENSG00000180616
<b>String:</b>	<a href="#">9606.ENSP00000350198</a>
<b>Molecular Weight:</b>	Observed MW: 41 kDa
<b>Buffer:</b>	PBS, pH 7.3, with 0.02% sodium azide and 50% glycerol.
<b>Concentration:</b>	2 mg/ml
<b>Note:</b>	This product is for research use only.

For Reference Only