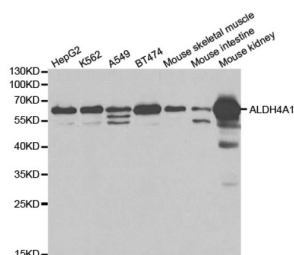
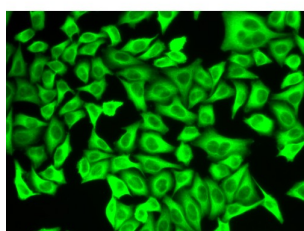


Aldehyde Dehydrogenase 4 Family, Member A1 (ALDH4A1) Antibody

Catalogue No.: abx002029



Western blot analysis of extracts of various cell lines, using ALDH4A1 antibody (abx002029) at 1/1000 dilution.



Immunofluorescence analysis of A549 cells using ALDH4A1 antibody (abx002029).

ALDH4A1 Antibody is a Rabbit Polyclonal antibody against ALDH4A1. This protein belongs to the aldehyde dehydrogenase family of proteins. This enzyme is a mitochondrial matrix NAD-dependent dehydrogenase which catalyzes the second step of the proline degradation pathway, converting pyrroline-5-carboxylate to glutamate. Deficiency of this enzyme is associated with type II hyperprolinemia, an autosomal recessive disorder characterized by accumulation of delta-1-pyrroline-5-carboxylate (P5C) and proline. Alternatively spliced transcript variants encoding different isoforms have been identified for this gene.

Target: Aldehyde Dehydrogenase 4 Family, Member A1 (ALDH4A1)

Clonality: Polyclonal

Reactivity: Human, Mouse, Rat

Tested Applications: WB, IF/ICC

Host: Rabbit

Recommended dilutions: WB: 1/2000 - 1/7000, IF/ICC: 1/50 - 1/200. Optimal dilutions/concentrations should be determined by the end user.

Conjugation: Unconjugated

Immunogen: Recombinant fusion protein containing a sequence corresponding to amino acids 354-563 of human ALDH4A1.

Isotype: IgG

Datasheet

Version: 2.0.0
Revision date: 03 Dec 2024



Form:	Liquid
Purification:	Purified by affinity chromatography.
Storage:	Aliquot and store at -20°C. Avoid repeated freeze/thaw cycles.
UniProt Primary AC:	P30038 (UniProt , ExpASY)
Gene Symbol:	ALDH4A1
GeneID:	8659
NCBI Accession:	NP_003739.2
KEGG:	hsa:8659
String:	9606.ENSP00000364490
Molecular Weight:	Calculated MW: 62 kDa Observed MW: 62 kDa
Buffer:	PBS, pH 7.3, containing 0.02% sodium azide, 50% glycerol.
Concentration:	> 0.2 mg/ml
Note:	This product is for research use only.

For Reference Only