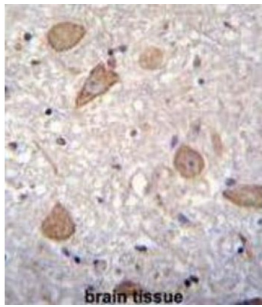
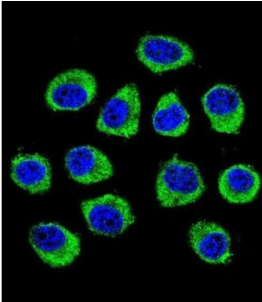


## Protein Cornichon Homolog 2 (CNIH2) Antibody

Catalogue No.: abx026306



Involved in the transport and maturation of proteins (By similarity).

**Target:** Protein Cornichon Homolog 2 (CNIH2)

**Clonality:** Polyclonal

**Reactivity:** Human

**Tested Applications:** ELISA, WB, IHC, IF/ICC, FCM

**Host:** Rabbit

**Recommended dilutions:** WB: 1/1000, IHC-P: 1/10 - 1/50, IF/ICC: 1/10 - 1/50, FCM: 1/10 - 1/50. Not tested in IHC-F. Optimal dilutions/concentrations should be determined by the end user.

**Conjugation:** Unconjugated

# Datasheet

Version: 7.0.0  
Revision date: 30 Jan 2025



<b>Immunogen:</b>	KLH-conjugated synthetic peptide between 31-59 amino acids from the N-terminal region of human CNIH2.
<b>Isotype:</b>	IgG
<b>Form:</b>	Liquid
<b>Purification:</b>	Purified through a protein A column, followed by peptide affinity purification.
<b>Storage:</b>	Aliquot and store at -20°C. Avoid repeated freeze/thaw cycles.
<b>UniProt Primary AC:</b>	Q6PI25 ( <a href="#">UniProt</a> , <a href="#">ExPASy</a> )
<b>Gene Symbol:</b>	CNIH2
<b>KEGG:</b>	hsa:254263
<b>String:</b>	<a href="#">9606.ENSP00000310003</a>
<b>Molecular Weight:</b>	Calculated MW: 18.9 kDa
<b>Buffer:</b>	PBS containing 0.09% sodium azide.
<b>Specificity:</b>	Predicted to react with Mouse, Rat and Chicken CNIH2.
<b>Note:</b>	This product is for research use only.

For Reference Only