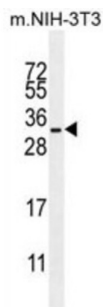


Ras-Related Protein R-Ras (RRAS) Antibody

Catalogue No.: abx026316



RRAS regulates the organization of the actin cytoskeleton.

Target:	Ras-Related Protein R-Ras (RRAS)
Clonality:	Polyclonal
Reactivity:	Human, Mouse
Tested Applications:	ELISA, WB
Host:	Rabbit
Recommended dilutions:	WB: 1/1000. Optimal dilutions/concentrations should be determined by the end user.
Conjugation:	Unconjugated
Immunogen:	KLH-conjugated synthetic peptide between 91-123 amino acids from the Central region of human RRAS.
Isotype:	IgG
Form:	Liquid
Purification:	Purified through a protein A column, followed by peptide affinity purification.
Storage:	Aliquot and store at -20°C. Avoid repeated freeze/thaw cycles.
UniProt Primary AC:	P10301 (UniProt , ExPASy)
Gene Symbol:	RRAS
GeneID:	6237

Datasheet

Version: 1.0.0
Revision date: 17 Nov 2024



OMIM: [165090](#)

HGNC: 10447

KEGG: hsa:6237

Ensembl: ENSG00000126458

String: [9606.ENSP00000246792](#)

Molecular Weight: Calculated MW: 23.5 kDa

Buffer: PBS containing 0.09% sodium azide.

Note: This product is for research use only.

For Reference Only