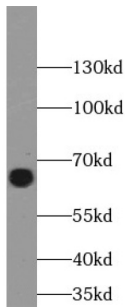
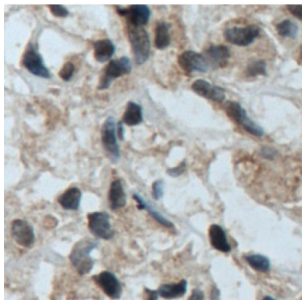


Transcription Factor Binding To IGHM Enhancer 3 (TFE3) Antibody

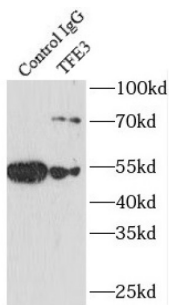
Catalogue No.: abx238626



WB analysis of K-562 cells, using TFE3 antibody (1/1000 dilution).



IHC-P analysis of human renal cell carcinoma tissue, using TFE3 Antibody (1/200 dilution).



IP analysis of K-562 cell lysate (1200 µg), using TFE3 antibody (4 µg, detection: 1/500 dilution).

TFE3 Antibody is a Rabbit Polyclonal against TFE3.

Target: Transcription Factor Binding To IGHM Enhancer 3 (TFE3)

Clonality: Polyclonal

Reactivity: Human, Mouse, Rat

Tested Applications: ELISA, WB, IHC, IP

Host: Rabbit

Recommended dilutions: WB: 1/500 - 1/5000, IHC: 1/50 - 1/500, IP: 1/200 - 1/2000. Optimal dilutions/concentrations should be determined by the end user.

Conjugation: Unconjugated

Datasheet

Version: 2.0.0
Revision date: 24 Sep 2024



Immunogen:	transcription factor binding to IGHM enhancer 3
Isotype:	IgG
Form:	Liquid
Purity:	≥ 95% (SDS-PAGE)
Purification:	Purified by immunogen affinity chromatography.
Storage:	Aliquot and store at -20°C. Avoid repeated freeze/thaw cycles.
Validity:	12 months.
UniProt Primary AC:	P19532 (UniProt , ExpASY)
Gene Symbol:	TFE3
GeneID:	7030
OMIM:	314310
HGNC:	11752
KEGG:	hsa:7030
Ensembl:	ENSG00000068323
String:	9606.ENSP00000314129
Molecular Weight:	Observed MW: 65 kDa
Buffer:	PBS, pH 7.3, with 0.02% sodium azide and 50% glycerol.
Concentration:	2 mg/ml
Note:	This product is for research use only.