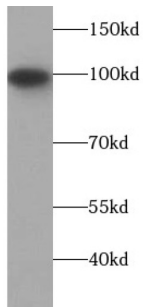
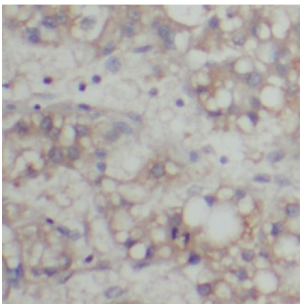


Toll Like Receptor 4 (TLR4) Antibody

Catalogue No.: abx238727



WB analysis of mouse liver tissue, using TLR4 antibody (1/1000 dilution).



IHC-P analysis of human liver cancer tissue, using TLR4 Antibody (1/200 dilution).

TLR4 Antibody is a Rabbit Polyclonal against TLR4.

Target:	Toll Like Receptor 4 (TLR4)
Clonality:	Polyclonal
Reactivity:	Human, Mouse, Rat
Tested Applications:	ELISA, WB, IHC
Host:	Rabbit
Recommended dilutions:	WB: 1/500 - 1/2000, IHC: 1/100 - 1/200. Optimal dilutions/concentrations should be determined by the end user.
Conjugation:	Unconjugated
Immunogen:	toll-like receptor 4
Isotype:	IgG
Form:	Liquid
Purity:	≥ 95% (SDS-PAGE)

Datasheet

Version: 1.0.0
Revision date: 24 Nov 2024



Purification:	Purified by immunogen affinity chromatography.
Storage:	Aliquot and store at -20°C. Avoid repeated freeze/thaw cycles.
Validity:	12 months.
UniProt Primary AC:	O00206 (UniProt , ExPASy)
Molecular Weight:	Observed MW: 95 kDa
Buffer:	PBS, pH 7.3, with 0.02% sodium azide and 50% glycerol.
Concentration:	2 mg/ml
Note:	This product is for research use only.

For Reference Only