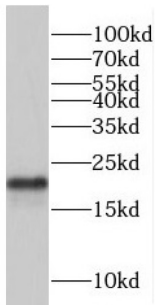
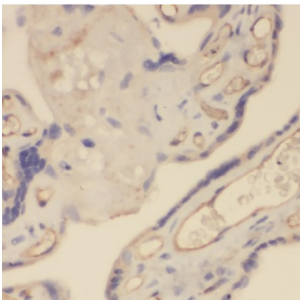


# Trafficking Protein Particle Complex Subunit 3 (TRAPPC3) Antibody

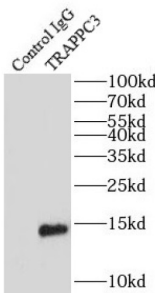
Catalogue No.: abx238947



WB analysis of mouse liver tissue, using TRAPPC3 antibody (1/800 dilution).



IHC-P analysis of human placenta tissue, using TRAPPC3 antibody (1/100 dilution).



IP analysis of mouse liver tissue lysate (4000 µg), using TRAPPC3 antibody (3 µg, detection: 1/800 dilution).

TRAPPC3 Antibody is a Rabbit Polyclonal against TRAPPC3.

**Target:** Trafficking Protein Particle Complex Subunit 3 (TRAPPC3)

**Clonality:** Polyclonal

**Reactivity:** Human, Mouse

**Tested Applications:** ELISA, WB, IHC, IF/ICC, IP

**Host:** Rabbit

**Recommended dilutions:** WB: 1/200 - 1/2000, IHC: 1/20 - 1/200, IF/ICC: 1/10 - 1/100, IP: 1/200 - 1/2000. Optimal dilutions/concentrations should be determined by the end user.

**Conjugation:** Unconjugated

# Datasheet

Version: 3.0.0  
Revision date: 21 Sep 2024



<b>Immunogen:</b>	trafficking protein particle complex 3
<b>Isotype:</b>	IgG
<b>Form:</b>	Liquid
<b>Purity:</b>	≥ 95% (SDS-PAGE)
<b>Purification:</b>	Purified by immunogen affinity chromatography.
<b>Storage:</b>	Aliquot and store at -20°C. Avoid repeated freeze/thaw cycles.
<b>Validity:</b>	12 months.
<b>UniProt Primary AC:</b>	O43617 ( <a href="#">UniProt</a> , <a href="#">ExPASy</a> )
<b>Gene Symbol:</b>	TRAPPC3
<b>GeneID:</b>	<a href="#">27095</a>
<b>OMIM:</b>	<a href="#">610955</a>
<b>HGNC:</b>	19942
<b>KEGG:</b>	hsa:27095
<b>Ensembl:</b>	ENSG00000054116
<b>String:</b>	<a href="#">9606.ENSP00000480332</a>
<b>Molecular Weight:</b>	Observed MW: 20 kDa, 30 kDa
<b>Buffer:</b>	PBS, pH 7.3, with 0.02% sodium azide and 50% glycerol.
<b>Concentration:</b>	2 mg/ml
<b>Note:</b>	This product is for research use only.