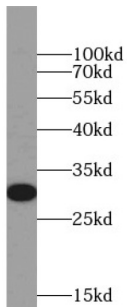
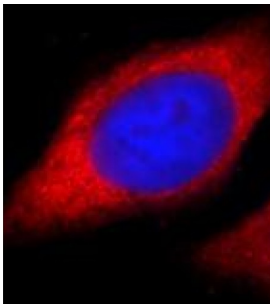


Triggering Receptor Expressed On Myeloid Cells 1 (TREM1) Antibody

Catalogue No.: abx238960



WB analysis of PC-3 cells, using TREM1 antibody (1/500 dilution).



IF analysis of HepG2 cells, using TREM1 antibody (1/25 dilution) and Rhodamine-conjugated goat anti-rabbit IgG (red). Blue pseudocolor = DAPI (fluorescent DNA dye).

TREM1 Antibody is a Rabbit Polyclonal against TREM1.

Target:	Triggering Receptor Expressed On Myeloid Cells 1 (TREM1)
Clonality:	Polyclonal
Reactivity:	Human, Mouse
Tested Applications:	ELISA, WB, IF/ICC, FCM
Host:	Rabbit
Recommended dilutions:	WB: 1/500 - 1/2000, IF/ICC: 1/10 - 1/100. Optimal dilutions/concentrations should be determined by the end user.
Conjugation:	Unconjugated
Immunogen:	triggering receptor expressed on myeloid cells 1
Isotype:	IgG
Form:	Liquid
Purity:	≥ 95% (SDS-PAGE)

Datasheet

Version: 1.0.0
Revision date: 21 Nov 2024



Purification:	Purified by immunogen affinity chromatography.
Storage:	Aliquot and store at -20°C. Avoid repeated freeze/thaw cycles.
Validity:	12 months.
UniProt Primary AC:	Q9NP99 (UniProt , ExPASy)
Gene Symbol:	TREM1
String:	9606.ENSP00000244709
Molecular Weight:	Observed MW: 30 kDa
Buffer:	PBS, pH 7.3, with 0.02% sodium azide and 50% glycerol.
Concentration:	2 mg/ml
Note:	This product is for research use only.

For Reference Only