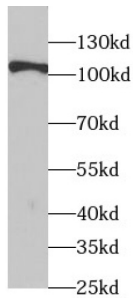


Datasheet

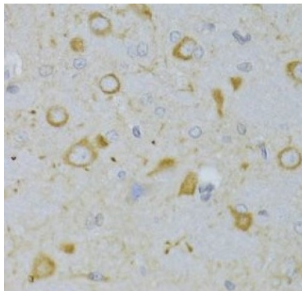
Version: 3.0.0
Revision date: 25 Nov 2024

Thyrotropin Receptor (TSHR) Antibody

Catalogue No.: abx239045



WB analysis of HeLa cells, using TSHR antibody (1/1000 dilution).



IHC-P analysis of rat brain tissue, using TSHR antibody (1/100 dilution).

TSHR Antibody is a Rabbit Polyclonal against TSHR.

Target: Thyrotropin Receptor (TSHR)

Clonality: Polyclonal

Reactivity: Human, Mouse, Rat

Tested Applications: ELISA, WB, IHC, IF/ICC

Host: Rabbit

Recommended dilutions: WB: 1/500 - 1/2000, IHC: 1/50 - 1/200, IF/ICC: 1/20 - 1/50. Optimal dilutions/concentrations should be determined by the end user.

Conjugation: Unconjugated

Immunogen: thyroid stimulating hormone receptor

Isotype: IgG

Form: Liquid

Purity: ≥ 95% (SDS-PAGE)

Datasheet

Version: 3.0.0
Revision date: 25 Nov 2024



Purification:	Purified by immunogen affinity chromatography.
Storage:	Aliquot and store at -20°C. Avoid repeated freeze/thaw cycles.
Validity:	12 months.
UniProt Primary AC:	P16473 (UniProt , ExpASY)
KEGG:	hsa:7253
String:	9606.ENSP00000441235
Molecular Weight:	Observed MW: 110 kDa
Buffer:	PBS, pH 7.3, with 0.02% sodium azide and 50% glycerol.
Concentration:	2 mg/ml
Note:	This product is for research use only.

For Reference Only