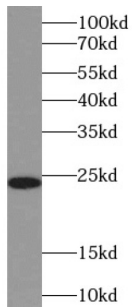
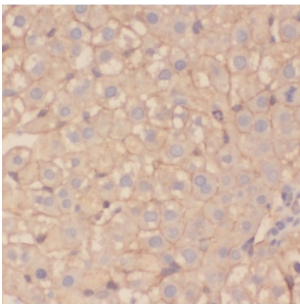


Pre-rRNA-Processing Protein TSR2 (TSR2) Antibody

Catalogue No.: abx239071



WB analysis of HeLa cells, using TSR2 antibody (1/400 dilution).



IHC-P analysis of human liver tissue, using TSR2 antibody (1/50 dilution).

TSR2 Antibody is a Rabbit Polyclonal against TSR2.

Target:	Pre-rRNA-Processing Protein TSR2 (TSR2)
Clonality:	Polyclonal
Reactivity:	Human, Mouse, Rat
Tested Applications:	ELISA, WB, IHC, IF/ICC
Host:	Rabbit
Recommended dilutions:	WB: 1/500 - 1/5000, IHC: 1/20 - 1/200, IF/ICC: 1/10 - 1/100. Optimal dilutions/concentrations should be determined by the end user.
Conjugation:	Unconjugated
Immunogen:	TSR2, 20S rRNA accumulation, homolog (<i>S. cerevisiae</i>)
Isotype:	IgG
Form:	Liquid
Purity:	≥ 95% (SDS-PAGE)

Datasheet

Version: 6.0.0
Revision date: 25 Apr 2025



Purification:	Purified by immunogen affinity chromatography.
Storage:	Aliquot and store at -20°C. Avoid repeated freeze/thaw cycles.
Validity:	12 months.
UniProt Primary AC:	Q969E8 (UniProt , ExpASY)
Gene Symbol:	TSR2
GeneID:	90121
OMIM:	300945
HGNC:	25455
KEGG:	hsa:90121
Ensembl:	ENSG00000158526
String:	9606.ENSP00000364293
Molecular Weight:	Observed MW: 21 kDa
Buffer:	PBS, pH 7.3, with 0.02% sodium azide and 50% glycerol.
Concentration:	2 mg/ml
Note:	THIS PRODUCT IS FOR RESEARCH USE ONLY. NOT FOR USE IN DIAGNOSTIC, THERAPEUTIC OR COSMETIC PROCEDURES. NOT FOR HUMAN OR ANIMAL CONSUMPTION.

For Reference Only