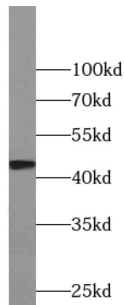
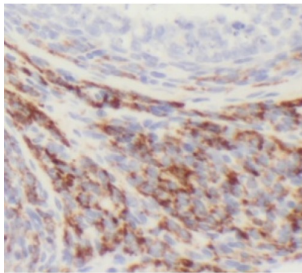


UCHL5IP Antibody

Catalogue No.: abx239221



WB analysis of MCF-7 cells, using UCHL5IP antibody (1/300 dilution).



IHC-P analysis of human ovary tissue, using UCHL5IP Antibody (1/50 dilution).

UCHL5IP Antibody is a Rabbit Polyclonal against UCHL5IP.

| | |
|-------------------------------|---|
| Target: | UCHL5IP |
| Clonality: | Polyclonal |
| Reactivity: | Human |
| Tested Applications: | ELISA, WB, IHC |
| Host: | Rabbit |
| Recommended dilutions: | WB: 1/200 - 1/1000, IHC: 1/20 - 1/200, IF/ICC: 1/50 - 1/500. Optimal dilutions/concentrations should be determined by the end user. |
| Conjugation: | Unconjugated |
| Immunogen: | UCHL5 interacting protein |
| Isotype: | IgG |
| Form: | Liquid |
| Purity: | ≥ 95% (SDS-PAGE) |

Datasheet

Version: 2.0.0
Revision date: 15 Jan 2025



| | |
|----------------------------|--|
| Purification: | Purified by immunogen affinity chromatography. |
| Storage: | Aliquot and store at -20°C. Avoid repeated freeze/thaw cycles. |
| Validity: | 12 months. |
| UniProt Primary AC: | Q99871 (UniProt , ExPASy) |
| KEGG: | hsa:55559 |
| String: | 9606.ENSP00000359230 |
| Molecular Weight: | Observed MW: 46 kDa |
| Buffer: | PBS, pH 7.3, with 0.02% sodium azide and 50% glycerol. |
| Concentration: | 2 mg/ml |
| Note: | This product is for research use only. |

For Reference Only