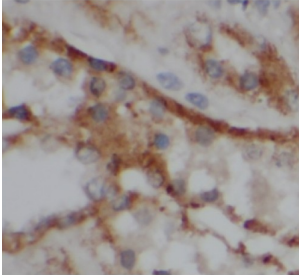


Vasoactive Intestinal Peptide Receptor (VIPR1) Antibody

Catalogue No.: abx239411



IHC-P analysis of human kidney tissue, using VIPR1 Antibody (1/50 dilution).

VIPR1 Antibody is a Rabbit Polyclonal against VIPR1.

| | |
|-------------------------------|---|
| Target: | Vasoactive Intestinal Peptide Receptor (VIPR1) |
| Clonality: | Polyclonal |
| Reactivity: | Human |
| Tested Applications: | ELISA, IHC |
| Host: | Rabbit |
| Recommended dilutions: | IHC: 1/20 - 1/200. Optimal dilutions/concentrations should be determined by the end user. |
| Conjugation: | Unconjugated |
| Immunogen: | vasoactive intestinal peptide receptor 1 |
| Isotype: | IgG |
| Form: | Liquid |
| Purity: | ≥ 95% (SDS-PAGE) |
| Purification: | Purified by immunogen affinity chromatography. |
| Storage: | Aliquot and store at -20°C. Avoid repeated freeze/thaw cycles. |
| Validity: | 12 months. |
| UniProt Primary AC: | P32241 (UniProt , ExPASy) |

Datasheet

Version: 1.0.0
Revision date: 22 Nov 2024



Gene Symbol: VIPR1

GeneID: [7433](#)

KEGG: hsa:7433

String: [9606.ENSP00000327246](#)

Molecular Weight: Observed MW: 52 kDa

Buffer: PBS, pH 7.3, with 0.02% sodium azide and 50% glycerol.

Concentration: 2 mg/ml

Note: This product is for research use only.

For Reference Only