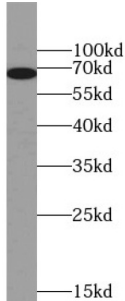
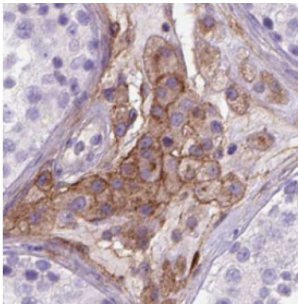


# V-Set And Immunoglobulin Domain-Containing Protein 1 (VSIG1) Antibody

Catalogue No.: abx239454



WB analysis of human stomach tissue, using VSIG1 antibody (1/1500 dilution).



IHC-P analysis of human testis tissue, using VSIG1 antibody (1/100 dilution).

VSIG1 Antibody is a Rabbit Polyclonal against VSIG1.

<b>Target:</b>	V-Set And Immunoglobulin Domain-Containing Protein 1 (VSIG1)
<b>Clonality:</b>	Polyclonal
<b>Reactivity:</b>	Human
<b>Tested Applications:</b>	ELISA, WB, IHC
<b>Host:</b>	Rabbit
<b>Recommended dilutions:</b>	WB: 1/500 - 1/5000, IHC: 1/20 - 1/200. Optimal dilutions/concentrations should be determined by the end user.
<b>Conjugation:</b>	Unconjugated
<b>Immunogen:</b>	V-set and immunoglobulin domain containing 1
<b>Isotype:</b>	IgG
<b>Form:</b>	Liquid

# Datasheet

Version: 3.0.0  
Revision date: 02 Feb 2025



<b>Purity:</b>	≥ 95% (SDS-PAGE)
<b>Purification:</b>	Purified by immunogen affinity chromatography.
<b>Storage:</b>	Aliquot and store at -20°C. Avoid repeated freeze/thaw cycles.
<b>Validity:</b>	12 months.
<b>UniProt Primary AC:</b>	Q86XK7 ( <a href="#">UniProt</a> , <a href="#">ExpASY</a> )
<b>Gene Symbol:</b>	VSIG1
<b>GeneID:</b>	<a href="#">340547</a>
<b>OMIM:</b>	<a href="#">300620</a>
<b>HGNC:</b>	28675
<b>KEGG:</b>	hsa:340547
<b>Ensembl:</b>	ENSG00000101842
<b>String:</b>	<a href="#">9606.ENSP00000402219</a>
<b>Molecular Weight:</b>	Observed MW: 70 kDa
<b>Buffer:</b>	PBS, pH 7.3, with 0.02% sodium azide and 50% glycerol.
<b>Concentration:</b>	2 mg/ml
<b>Note:</b>	This product is for research use only.

For Reference Only