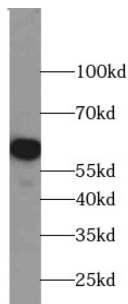


Zinc Finger And BTB Domain-Containing Protein 22 (ZBTB22) Antibody

Catalogue No.: abx239590



WB analysis of mouse brain tissue, using ZBTB22 antibody (1/600 dilution).

ZBTB22 Antibody is a Rabbit Polyclonal against ZBTB22.

Target:	Zinc Finger And BTB Domain-Containing Protein 22 (ZBTB22)
Clonality:	Polyclonal
Reactivity:	Human, Mouse
Tested Applications:	ELISA, WB
Host:	Rabbit
Recommended dilutions:	WB: 1/200 - 1/2000. Optimal dilutions/concentrations should be determined by the end user.
Conjugation:	Unconjugated
Immunogen:	zinc finger and BTB domain containing 22
Isotype:	IgG
Form:	Liquid
Purity:	≥ 95% (SDS-PAGE)
Purification:	Purified by immunogen affinity chromatography.
Storage:	Aliquot and store at -20°C. Avoid repeated freeze/thaw cycles.
Validity:	12 months.
UniProt Primary AC:	O15209 (UniProt , ExPASy)

Datasheet

Version: 3.0.0
Revision date: 16 Mar 2025



Gene Symbol: ZBTB22

GeneID: [9278](#)

OMIM: [611439](#)

HGNC: 13085

KEGG: hsa:9278

Ensembl: ENSG00000206280

String: [9606.ENSP00000407545](#)

Molecular Weight: Observed MW: 66 kDa

Buffer: PBS, pH 7.3, with 0.02% sodium azide and 50% glycerol.

Concentration: 2 mg/ml

Note: THIS PRODUCT IS FOR RESEARCH USE ONLY. NOT FOR USE IN DIAGNOSTIC, THERAPEUTIC OR COSMETIC PROCEDURES. NOT FOR HUMAN OR ANIMAL CONSUMPTION.

For Reference Only