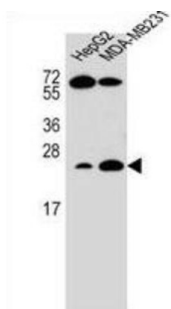
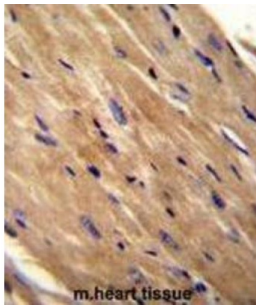


## Rho-Related GTP-Binding Protein RhoJ (RHOJ) Antibody

Catalogue No.: abx026427



RHOJ belongs to the Rho family of small GTP-binding proteins. Rho proteins regulate the dynamic assembly of cytoskeletal components for several physiologic processes, such as cell proliferation and motility and the establishment of cell polarity. They are also involved in pathophysiologic process, such as cell transformation and metastasis.

<b>Target:</b>	Rho-Related GTP-Binding Protein RhoJ (RHOJ)
<b>Clonality:</b>	Polyclonal
<b>Reactivity:</b>	Human
<b>Tested Applications:</b>	ELISA, WB, IHC
<b>Host:</b>	Rabbit
<b>Recommended dilutions:</b>	WB: 1/1000, IHC-P: 1/10 - 1/50. Not tested in IHC-F. Optimal dilutions/concentrations should be determined by the end user.
<b>Conjugation:</b>	Unconjugated
<b>Immunogen:</b>	KLH-conjugated synthetic peptide between 131-159 amino acids from the Central region of human RHOJ.
<b>Isotype:</b>	IgG
<b>Form:</b>	Liquid

# Datasheet

Version: 2.0.0  
Revision date: 02 Feb 2025



<b>Purification:</b>	Purified through a protein A column, followed by peptide affinity purification.
<b>Storage:</b>	Aliquot and store at -20°C. Avoid repeated freeze/thaw cycles.
<b>UniProt Primary AC:</b>	Q9H4E5 ( <a href="#">UniProt</a> , <a href="#">ExPASy</a> )
<b>Gene Symbol:</b>	RHOJ
<b>String:</b>	<a href="#">9606.ENSP00000316729</a>
<b>Molecular Weight:</b>	Calculated MW: 23.8 kDa
<b>Buffer:</b>	PBS containing 0.09% sodium azide.
<b>Specificity:</b>	Predicted to react with Mouse RHOJ.
<b>Note:</b>	This product is for research use only.

For Reference Only