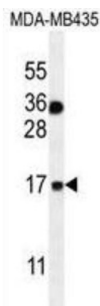
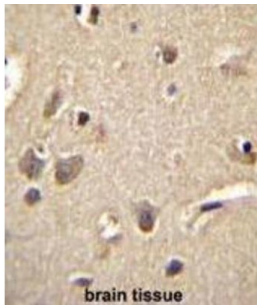


Protein S100-A1 (S100A1) Antibody

Catalogue No.: abx026438



The protein encoded by this gene is a member of the S100 family of proteins containing 2 EF-hand calcium-binding motifs. S100 proteins are localized in the cytoplasm and/or nucleus of a wide range of cells, and involved in the regulation of a number of cellular processes such as cell cycle progression and differentiation. S100 genes include at least 13 members which are located as a cluster on chromosome 1q21. This protein may function in stimulation of Ca²⁺-induced Ca²⁺ release, inhibition of microtubule assembly, and inhibition of protein kinase C-mediated phosphorylation. Reduced expression of this protein has been implicated in cardiomyopathies.

Target: Protein S100-A1 (S100A1)

Clonality: Polyclonal

Reactivity: Human

Tested Applications: ELISA, WB, IHC

Host: Rabbit

Recommended dilutions: WB: 1/1000, IHC-P: 1/50 - 1/100. Not tested in IHC-F. Optimal dilutions/concentrations should be determined by the end user.

Conjugation: Unconjugated

Immunogen: KLH-conjugated synthetic peptide between 45-75 amino acids from the C-terminal region of human S100A1.

Isotype: IgG

Datasheet

Version: 3.0.0
Revision date: 15 Nov 2024



Form:	Liquid
Purification:	Purified through a protein A column, followed by peptide affinity purification.
Storage:	Aliquot and store at -20°C. Avoid repeated freeze/thaw cycles.
UniProt Primary AC:	P23297 (UniProt , ExpASY)
Gene Symbol:	S100A1
KEGG:	hsa:6271
String:	9606.ENSP00000292169
Molecular Weight:	Calculated MW: 10.5 kDa
Buffer:	PBS containing 0.09% sodium azide.
Specificity:	Predicted to react with Cow S100A1.
Note:	This product is for research use only.

For Reference Only