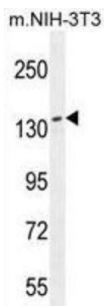
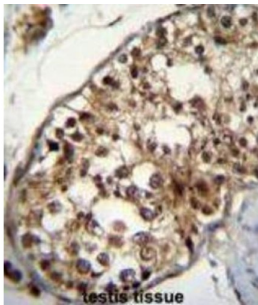


Nucleoporin 160 (NUP160) Antibody

Catalogue No.: abx026445



NUP160 is 1 of up to 60 proteins that make up the 120-MD nuclear pore complex, which mediates nucleoplasmic transport.

Target:	Nucleoporin 160 (NUP160)
Clonality:	Polyclonal
Reactivity:	Mouse
Tested Applications:	ELISA, WB, IHC
Host:	Rabbit
Recommended dilutions:	WB: 1/1000, IHC-P: 1/50 - 1/100. Not tested in IHC-F. Optimal dilutions/concentrations should be determined by the end user.
Conjugation:	Unconjugated
Immunogen:	KLH-conjugated synthetic peptide between 428-455 amino acids from the Central region of human NUP160.
Isotype:	IgG
Form:	Liquid
Purification:	Purified through a protein A column, followed by peptide affinity purification.

Datasheet

Version: 2.0.0
Revision date: 25 Nov 2024



Storage: Aliquot and store at -20°C. Avoid repeated freeze/thaw cycles.

UniProt Primary AC: Q12769 ([UniProt](#), [ExPASy](#))

KEGG: hsa:23279

String: [9606.ENSP00000367721](#)

Molecular Weight: Calculated MW: 162 kDa

Buffer: PBS containing 0.09% sodium azide.

Note: This product is for research use only.

For Reference Only