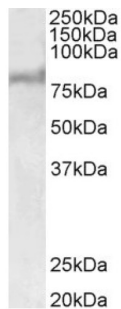


ATP Binding Cassette Subfamily D Member 2 (ABCD2) Antibody

Catalogue No.: abx432266



abx432266 (1 µg/ml) staining of Human Liver lysate (35 µg protein in RIPA buffer). Primary incubation was 1 hour. Detected by chemiluminescence.

ABCD2 Antibody is a Goat Polyclonal antibody against ABCD2.

Target:	ATP Binding Cassette Subfamily D Member 2 (ABCD2)
Clonality:	Polyclonal
Reactivity:	Human
Tested Applications:	P-ELISA, WB
Host:	Goat
Recommended dilutions:	P-ELISA: 1/32000. Optimal dilutions/concentrations should be determined by the end user.
Conjugation:	Unconjugated
Immunogen:	abx616807 - Internal region, 460-473 AA: C-PLSDTLAIK GKVID
Isotype:	IgG
Form:	Liquid
Purification:	Purified from goat serum by ammonium sulphate precipitation followed by antigen affinity chromatography using the immunizing peptide.
Storage:	Aliquot and store at -20°C. Avoid repeated freeze/thaw cycles.
Gene Symbol:	ABCD2
GeneID:	225
NCBI Accession:	NP_005155.1

Datasheet

Version: 1.0.0

Revision date: 05 Feb 2025



Buffer: Tris saline, pH 7.3, containing 0.02% sodium azide and 0.5% bovine serum albumin.

Concentration: 0.5 mg/ml

Note: This product is for research use only.

For Reference Only