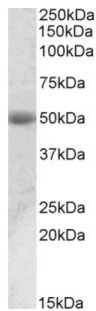


# Datasheet

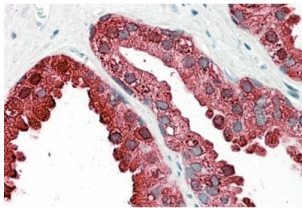
Version: 2.0.0  
Revision date: 12 Mar 2025

## Prostatic Acid Phosphatase (ACPP) Antibody

Catalogue No.: abx430182



abx430182 (0.01 µg/ml) staining of Human Prostate lysate (35 µg protein in RIPA buffer). Primary incubation was 1 hour. Detected by chemiluminescence.



abx430182 (3.8 µg/ml) staining of paraffin embedded Human Prostate. Steamed antigen retrieval with citrate buffer pH 6, AP-staining.

ACPP Antibody is a Goat Polyclonal antibody against ACPP.

**Target:** Prostatic Acid Phosphatase (ACPP)

**Clonality:** Polyclonal

**Reactivity:** Human

**Tested Applications:** P-ELISA, WB, IHC

**Host:** Goat

**Recommended dilutions:** P-ELISA: 1/32000. Optimal dilutions/concentrations should be determined by the end user.

**Conjugation:** Unconjugated

**Immunogen:** [abx616583](#) - Internal region, 269-282 AA: C-NHMKRATQIPSYKK

**Isotype:** IgG

**Form:** Liquid

**Purification:** Purified from goat serum by ammonium sulphate precipitation followed by antigen affinity chromatography using the immunizing peptide.

# Datasheet

Version: 2.0.0

Revision date: 12 Mar 2025



<b>Storage:</b>	Aliquot and store at -20°C. Avoid repeated freeze/thaw cycles.
<b>Gene Symbol:</b>	ACP3
<b>GeneID:</b>	<a href="#">55</a>
<b>NCBI Accession:</b>	NP_001127666.1, NP_001090.2
<b>Buffer:</b>	Tris saline, pH 7.3, containing 0.02% sodium azide and 0.5% bovine serum albumin.
<b>Concentration:</b>	0.5 mg/ml
<b>Note:</b>	THIS PRODUCT IS FOR RESEARCH USE ONLY. NOT FOR USE IN DIAGNOSTIC, THERAPEUTIC OR COSMETIC PROCEDURES. NOT FOR HUMAN OR ANIMAL CONSUMPTION.

For Reference Only