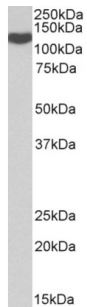
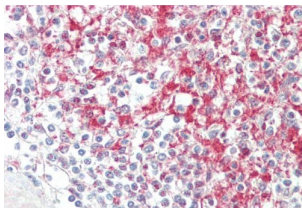


ADAM Metallopeptidase Domain 19 (ADAM19) Antibody

Catalogue No.: abx432280



abx432280 (0.1 µg/ml) staining of Spleen lysate (35 µg protein in RIPA buffer). Primary incubation was 1 hour. Detected by chemiluminescence.



abx432280 (5 µg/ml) staining of paraffin embedded Human Spleen. Steamed antigen retrieval with citrate buffer pH 6, AP-staining.

ADAM19 Antibody is a Goat Polyclonal antibody against ADAM19.

Target: ADAM Metallopeptidase Domain 19 (ADAM19)

Clonality: Polyclonal

Reactivity: Human

Tested Applications: P-ELISA, WB, IHC

Host: Goat

Recommended dilutions: P-ELISA: 1/128000. Optimal dilutions/concentrations should be determined by the end user.

Conjugation: Unconjugated

Immunogen: [abx617152](#) - Internal region: KIQCSSEARPLESN

Isotype: IgG

Form: Liquid

Purification: Purified from goat serum by ammonium sulphate precipitation followed by antigen affinity chromatography using the immunizing peptide.

Datasheet

Version: 1.0.0
Revision date: 13 Mar 2025



Storage: Aliquot and store at -20°C. Avoid repeated freeze/thaw cycles.

Gene Symbol: ADAM19

GeneID: [8728](#)

NCBI Accession: NP_150377.1

Buffer: Tris saline, pH 7.3, containing 0.02% sodium azide and 0.5% bovine serum albumin.

Concentration: 0.5 mg/ml

Note: THIS PRODUCT IS FOR RESEARCH USE ONLY. NOT FOR USE IN DIAGNOSTIC, THERAPEUTIC OR COSMETIC PROCEDURES. NOT FOR HUMAN OR ANIMAL CONSUMPTION.

For Reference Only