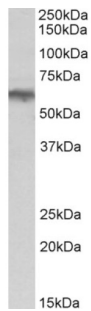


Alpha 1B Adrenergic Receptor (ADRA1B) Antibody

Catalogue No.: abx431081



abx431081 (0.3 µg/ml) staining of Human Cerebellum lysate (35 µg protein in RIPA buffer). Primary incubation was 1 hour. Detected by chemiluminescence.

ADRA1B Antibody is a Goat Polyclonal antibody against ADRA1B.

Target:	Alpha 1B Adrenergic Receptor (ADRA1B)
Clonality:	Polyclonal
Reactivity:	Human
Tested Applications:	P-ELISA, WB
Host:	Goat
Recommended dilutions:	P-ELISA: 1/128000. Optimal dilutions/concentrations should be determined by the end user.
Conjugation:	Unconjugated
Immunogen:	abx616985 - Internal region, 252-264 AA: C-TLRIHSKNFHEDT
Isotype:	IgG
Form:	Liquid
Purification:	Purified from goat serum by ammonium sulphate precipitation followed by antigen affinity chromatography using the immunizing peptide.
Storage:	Aliquot and store at -20°C. Avoid repeated freeze/thaw cycles.
Gene Symbol:	ADRA1B
GeneID:	147 11548 24173
NCBI Accession:	NP_000670.1

Datasheet

Version: 7.0.0

Revision date: 11 Mar 2025



Buffer: Tris saline, pH 7.3, containing 0.02% sodium azide and 0.5% bovine serum albumin.

Concentration: 0.5 mg/ml

Note: THIS PRODUCT IS FOR RESEARCH USE ONLY. NOT FOR USE IN DIAGNOSTIC, THERAPEUTIC OR COSMETIC PROCEDURES. NOT FOR HUMAN OR ANIMAL CONSUMPTION.

For Reference Only